

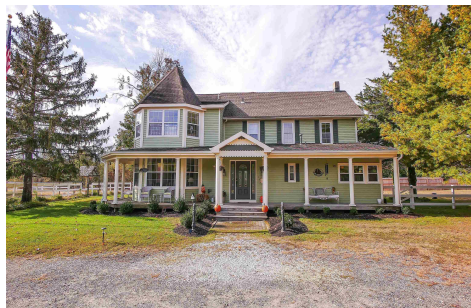


Berger Realty, Inc.
3160 Asbury Avenue
Ocean City, NJ 08226
1-877-237-4371 / 609-399-0076
info@bergerrealty.com



11 Equestrian, Smithville, NJ, 08205

Price \$650,000.00



PROPERTY DETAILS

| | |
|--------------|---------------|
| Total Rooms | 12 |
| Bedrooms | 4 |
| Baths Full | 2 |
| Baths Half | 1 |
| Year Built | |
| Type | Single Family |
| Block Number | 1179.03 |
| Listing # | 590258 |
| Taxes | 8986.00 |

COMMENTS

Welcome to 11 Equestrian Drive! Magnificent 3,159 GFA. Victorian on 1.9 Acres at the end of a private lane in a great exclusive Smithville location. This stunning 4-bedroom, 2 ½ bath home beautifully blends modern updates with original charm, making it a true gem in South Jersey. This unique property combines having extreme privacy on a large piece of land with the luxury...

PROPERTY FEATURES

| | | | |
|-----------------------|--------------------|--------------------|----------------------|
| Exterior | OutsideFeatures | ParkingGarage | OtherRooms |
| Vinyl | Deck | Detached Garage | Breakfast Nook |
| | Fenced Yard | Three or More Cars | Den/TV Room |
| | Porch | | Dining Room |
| | Shed | | Eat In Kitchen |
| | | | Florida Room |
| | | | Laundry/Utility Room |
| | | | Pantry |
| | | | Storage Attic |
| | | | Workshop |
| InteriorFeatures | AppliancesIncluded | AlsoIncluded | Basement |
| Carbon Monoxide | Dishwasher | Blinds | Crawl Space |
| Detector | Disposal | Curtains | |
| Kitchen Center Island | Dryer | | |
| Smoke/Fire Alarm | Gas Stove | | |
| Storage | Microwave | | |
| | Refrigerator | | |
| | Self Cleaning Oven | | |
| | Washer | | |
| Heating | Cooling | Water | Sewer |
| Forced Air | Electric | Public | Public Sewer |
| Gas-Natural | Multi-Zoned | | |
| Multi-Zoned | | | |

CONTACT

Ask for Matthew Bader
Berger Realty Inc

Scan to see Property page.



Berger Realty, Inc.
3160 Asbury Avenue
Ocean City, NJ 08226
1-877-237-4371 / 609-399-0076
info@bergerrealty.com



11 Equestrian, Smithville, NJ, 08205

Price \$650,000.00



PROPERTY DETAILS

| | |
|--------------|---------------|
| Total Rooms | 12 |
| Bedrooms | 4 |
| Baths Full | 2 |
| Baths Half | 1 |
| Year Built | |
| Type | Single Family |
| Block Number | 1179.03 |
| Listing # | 590258 |
| Taxes | 8986.00 |

COMMENTS

Welcome to 11 Equestrian Drive! Magnificent 3,159 GFA. Victorian on 1.9 Acres at the end of a private lane in a great exclusive Smithville location. This stunning 4-bedroom, 2 ½ bath home beautifully blends modern updates with original charm, making it a true gem in South Jersey. This unique property combines having extreme privacy on a large piece of land with the luxury...

PROPERTY FEATURES

| | | | |
|-----------------------|--------------------|--------------------|----------------------|
| Exterior | OutsideFeatures | ParkingGarage | OtherRooms |
| Vinyl | Deck | Detached Garage | Breakfast Nook |
| | Fenced Yard | Three or More Cars | Den/TV Room |
| | Porch | | Dining Room |
| | Shed | | Eat In Kitchen |
| | | | Florida Room |
| | | | Laundry/Utility Room |
| | | | Pantry |
| | | | Storage Attic |
| | | | Workshop |
| InteriorFeatures | AppliancesIncluded | AlsoIncluded | Basement |
| Carbon Monoxide | Dishwasher | Blinds | Crawl Space |
| Detector | Disposal | Curtains | |
| Kitchen Center Island | Dryer | | |
| Smoke/Fire Alarm | Gas Stove | | |
| Storage | Microwave | | |
| | Refrigerator | | |
| | Self Cleaning Oven | | |
| | Washer | | |
| Heating | Cooling | Water | Sewer |
| Forced Air | Electric | Public | Public Sewer |
| Gas-Natural | Multi-Zoned | | |
| Multi-Zoned | | | |

CONTACT

Ask for Matthew Bader
Berger Realty Inc

Scan to see Property page.



3160 Asbury Avenue, Ocean City
Call: 609-992-4380
Email to: mhb@bergerrealty.com
<http://www.BADERCOLLINS.com>



3160 Asbury Avenue, Ocean City
Call: 609-992-4380
Email to: mhb@bergerrealty.com
<http://www.BADERCOLLINS.com>

