



Berger Realty, Inc.  
3160 Asbury Avenue  
Ocean City, NJ 08226  
1-877-237-4371 / 609-399-0076  
info@bergerrealty.com



90 11th Ave, Mays Landing, NJ, 08330

Price \$99,000.00



#### PROPERTY DETAILS

Total Rooms	
Bedrooms	0
Baths Full	0
Baths Half	0
Year Built	
Type	
Block Number	48
Listing #	590170
Taxes	2207.00

#### COMMENTS

*When you can't find it, you BUILD IT! Discover this expansive 11+ acre property in the highly sought-after Estell Manor. With its ample space and desirable location, this land offers endless possibilities for your dream project or investment. Survey and building plans available upon request....*

#### PROPERTY FEATURES

#### CONTACT



Ask for Margarita Kobilianets  
Berger Realty Inc  
3160 Asbury Avenue, Ocean City  
Call: 609-674-3417  
Email to: mak@bergerrealty.com

Scan to see Property page.



Berger Realty, Inc.  
3160 Asbury Avenue  
Ocean City, NJ 08226  
1-877-237-4371 / 609-399-0076  
info@bergerrealty.com



90 11th Ave, Mays Landing, NJ, 08330

Price \$99,000.00



#### PROPERTY DETAILS

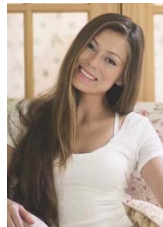
Total Rooms	
Bedrooms	0
Baths Full	0
Baths Half	0
Year Built	
Type	
Block Number	48
Listing #	590170
Taxes	2207.00

#### COMMENTS

*When you can't find it, you BUILD IT! Discover this expansive 11+ acre property in the highly sought-after Estell Manor. With its ample space and desirable location, this land offers endless possibilities for your dream project or investment. Survey and building plans available upon request....*

#### PROPERTY FEATURES

#### CONTACT



Ask for Margarita Kobilianets  
Berger Realty Inc  
3160 Asbury Avenue, Ocean City  
Call: 609-674-3417  
Email to: mak@bergerrealty.com

Scan to see Property page.

