

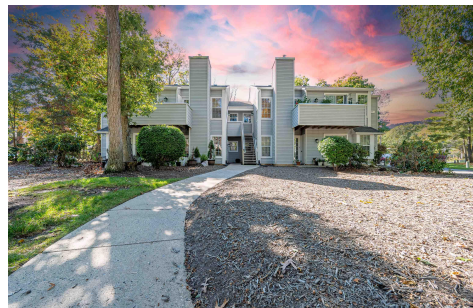


Berger Realty, Inc.
3160 Asbury Avenue
Ocean City, NJ 08226
1-877-237-4371 / 609-399-0076
info@bergerrealty.com



54 Pheasant Meadow Dr, 54, Galloway Township, NJ, 08205

Price \$235,000.00



PROPERTY DETAILS

Total Rooms	5
Bedrooms	2
Baths Full	2
Baths Half	0
Year Built	
Type	Condo
Block Number	1260.07
Listing #	590119
Taxes	3208.00

COMMENTS

HURRY!!!!!! Before it disappear ?? Welcome to this beautifully designed condo located in the heart of the desirable Smithville community in Galloway, NJ. This stylish and functional home offers the perfect blend of comfort and convenience. Featuring an open-concept layout, the condo boasts a spacious living area with modern finishes, making it ideal for entertaining or rel...

PROPERTY FEATURES

Exterior Vinyl	ParkingGarage None	Heating Gas-Natural	Cooling Central
HotWater Gas	Water Public Water	Sewer Public Sewer	

CONTACT



Ask for Sean McGinnis
Berger Realty Inc
3160 Asbury Avenue, Ocean City
Call: 609-703-9955
Email to: smc@bergerrealty.com

Scan to see Property page.

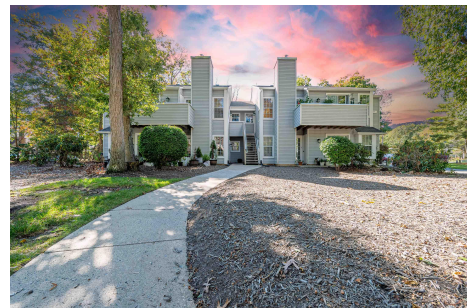


Berger Realty, Inc.
3160 Asbury Avenue
Ocean City, NJ 08226
1-877-237-4371 / 609-399-0076
info@bergerrealty.com



54 Pheasant Meadow Dr, 54, Galloway Township, NJ, 08205

Price \$235,000.00



PROPERTY DETAILS

Total Rooms	5
Bedrooms	2
Baths Full	2
Baths Half	0
Year Built	
Type	Condo
Block Number	1260.07
Listing #	590119
Taxes	3208.00

COMMENTS

HURRY!!!!!! Before it disappear ?? Welcome to this beautifully designed condo located in the heart of the desirable Smithville community in Galloway, NJ. This stylish and functional home offers the perfect blend of comfort and convenience. Featuring an open-concept layout, the condo boasts a spacious living area with modern finishes, making it ideal for entertaining or rel...

PROPERTY FEATURES

Exterior Vinyl	ParkingGarage None	Heating Gas-Natural	Cooling Central
HotWater Gas	Water Public Water	Sewer Public Sewer	

CONTACT



Ask for Sean McGinnis
Berger Realty Inc
3160 Asbury Avenue, Ocean City
Call: 609-703-9955
Email to: smc@bergerrealty.com

Scan to see Property page.

