

Berger Realty

Since 1928



Berger Realty, Inc.
3160 Asbury Avenue
Ocean City, NJ 08226
1-877-237-4371 / 609-399-0076
info@bergerrealty.com



136 Crescent, Ocean City, NJ, 08226

Price \$1,299,000.00

PROPERTY DETAILS

Total Rooms	0
Bedrooms	0
Baths Full	0
Baths Half	0
Year Built	1932
Type	Single Family
Block Number	70.16
Listing #	590028
Taxes	2023.00

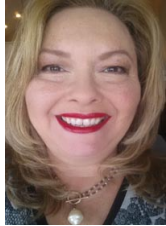
COMMENTS

Plans are available for a 4 Bedroom Single Family home up to approximately 3,000 square feet. Property is being sold in AS-IS condition. Renovate or build to suit. Located in the Gardens district of Ocean City, close proximity to the bay, and a short bike ride to the beach. If you were to build a new home on this property, you will have bay views from the top floor....

PROPERTY FEATURES

ParkingGarage	Heating	Water	Sewer
None	None	Public	Public Sewer

CONTACT



Ask for Theresa Maina
Berger Realty Inc
3160 Asbury Avenue, Ocean City
Call: 609-703-7725
Email to: tam@bergerrealty.com

Scan to see Property page.



Berger Realty

Since 1928



Berger Realty, Inc.
3160 Asbury Avenue
Ocean City, NJ 08226
1-877-237-4371 / 609-399-0076
info@bergerrealty.com



136 Crescent, Ocean City, NJ, 08226

Price \$1,299,000.00

PROPERTY DETAILS

Total Rooms	0
Bedrooms	0
Baths Full	0
Baths Half	0
Year Built	1932
Type	Single Family
Block Number	70.16
Listing #	590028
Taxes	2023.00

COMMENTS

Plans are available for a 4 Bedroom Single Family home up to approximately 3,000 square feet. Property is being sold in AS-IS condition. Renovate or build to suit. Located in the Gardens district of Ocean City, close proximity to the bay, and a short bike ride to the beach. If you were to build a new home on this property, you will have bay views from the top floor....

PROPERTY FEATURES

ParkingGarage	Heating	Water	Sewer
None	None	Public	Public Sewer

CONTACT



Ask for Theresa Maina
Berger Realty Inc
3160 Asbury Avenue, Ocean City
Call: 609-703-7725
Email to: tam@bergerrealty.com

Scan to see Property page.

