

# Berger Realty

Since 1926



Berger Realty, Inc.  
3160 Asbury Avenue  
Ocean City, NJ 08226  
1-877-237-4371 / 609-399-0076  
info@bergerrealty.com

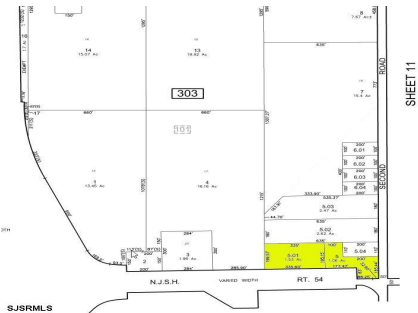


901 12th, Hammonton, NJ, 08037

Price \$449,900.00

### PROPERTY DETAILS

Total Rooms	0
Bedrooms	0
Baths Full	0
Baths Half	0
Year Built	
Type	
Block Number	303
Listing #	589959
Taxes	5515.00



### COMMENTS

Great corner location for commercial development on Rt. #54 at the intersection of 2nd Road. The site is located just 1/10 mile from Atlantic City Expressway entrance and directly across and adjacent to Industrial, Commercial Properties. Property consists of two lots 901 12th (Block 303, Lot 5) and lot 931 12th (Block 303, Lot 5.01) . 901 12th (Corner Property) (2.59 acres...

### PROPERTY FEATURES

Water Public      Sewer Public Sewer

### CONTACT

Berger Realty Inc  
3160 Asbury Ave.  
Ocean City, NJ 08226  
Call: (609) 399-0076  
Email to: info@bergerrealty.com  
Web: www.bergerrealty.com

Scan to see Property page.



# Berger Realty

Since 1926



Berger Realty, Inc.  
3160 Asbury Avenue  
Ocean City, NJ 08226  
1-877-237-4371 / 609-399-0076  
info@bergerrealty.com



901 12th, Hammonton, NJ, 08037

Price \$449,900.00

### PROPERTY DETAILS

Total Rooms	0
Bedrooms	0
Baths Full	0
Baths Half	0
Year Built	
Type	
Block Number	303
Listing #	589959
Taxes	5515.00



### COMMENTS

Great corner location for commercial development on Rt. #54 at the intersection of 2nd Road. The site is located just 1/10 mile from Atlantic City Expressway entrance and directly across and adjacent to Industrial, Commercial Properties. Property consists of two lots 901 12th (Block 303, Lot 5) and lot 931 12th (Block 303, Lot 5.01) . 901 12th (Corner Property) (2.59 acres...

### PROPERTY FEATURES

Water Public      Sewer Public Sewer

### CONTACT

Berger Realty Inc  
3160 Asbury Ave.  
Ocean City, NJ 08226  
Call: (609) 399-0076  
Email to: info@bergerrealty.com  
Web: www.bergerrealty.com

Scan to see Property page.

