

Berger Realty

Since 1926



Berger Realty, Inc.
3160 Asbury Avenue
Ocean City, NJ 08226
1-877-237-4371 / 609-399-0076
info@bergerrealty.com

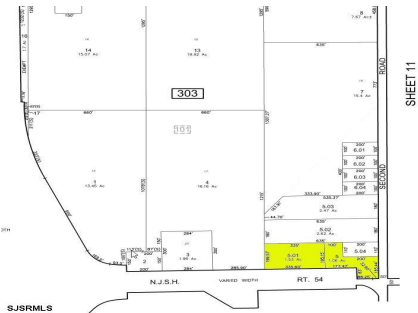


901 12th, Hammonton, NJ, 08037

Price \$449,900.00

PROPERTY DETAILS

Total Rooms	0
Bedrooms	0
Baths Full	0
Baths Half	0
Year Built	
Type	
Block Number	303
Listing #	589959
Taxes	5515.00



COMMENTS

Great corner location for commercial development on Rt. #54 at the intersection of 2nd Road. The site is located just 1/10 mile from Atlantic City Expressway entrance and directly across and adjacent to Industrial, Commercial Properties. Property consists of two lots 901 12th (Block 303, Lot 5) and lot 931 12th (Block 303, Lot 5.01) . 901 12th (Corner Property) (2.59 acres...

PROPERTY FEATURES

Water Public Sewer Public Sewer

CONTACT



Ask for Dori Adams
Berger Realty Inc
3160 Asbury Avenue, Ocean City
Call: 609-602-2545
Email to: doa@bergerrealty.com

Scan to see Property page.



Berger Realty

Since 1926



Berger Realty, Inc.
3160 Asbury Avenue
Ocean City, NJ 08226
1-877-237-4371 / 609-399-0076
info@bergerrealty.com



901 12th, Hammonton, NJ, 08037

Price \$449,900.00

PROPERTY DETAILS

Total Rooms	0
Bedrooms	0
Baths Full	0
Baths Half	0
Year Built	
Type	
Block Number	303
Listing #	589959
Taxes	5515.00



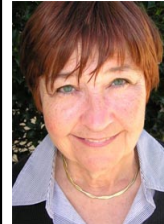
COMMENTS

Great corner location for commercial development on Rt. #54 at the intersection of 2nd Road. The site is located just 1/10 mile from Atlantic City Expressway entrance and directly across and adjacent to Industrial, Commercial Properties. Property consists of two lots 901 12th (Block 303, Lot 5) and lot 931 12th (Block 303, Lot 5.01) . 901 12th (Corner Property) (2.59 acres...

PROPERTY FEATURES

Water Public Sewer Public Sewer

CONTACT



Ask for Dori Adams
Berger Realty Inc
3160 Asbury Avenue, Ocean City
Call: 609-602-2545
Email to: doa@bergerrealty.com

Scan to see Property page.

