

Berger Realty

Since 1926



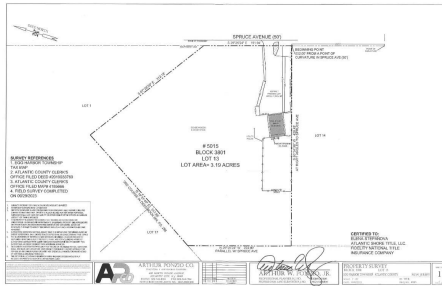
Berger Realty, Inc.
3160 Asbury Avenue
Ocean City, NJ 08226
1-877-237-4371 / 609-399-0076
info@bergerrealty.com



5015 Spruce, Egg Harbor Township, NJ, 08234

Price \$275,000.00

PROPERTY DETAILS



Total Rooms	0
Bedrooms	0
Baths Full	0
Baths Half	0
Year Built	
Type	
Block Number	3801
Listing #	589555
Taxes	5366.00

COMMENTS

Property has over 3 acres of land that can be both residential or commercial. The current building is about 1,500 sq ft that can be used for commercial purposes or build a new home. Offers easy access to Atlantic City & County. Within approximately 4 mile of Parkway & Expressway. Buyer is responsible for all/any approvals from the township. Property is being lot As-Is....

PROPERTY FEATURES

CONTACT

Berger Realty Inc
3160 Asbury Ave.
Ocean City, NJ 08226
Call: (609) 399-0076
Email to: info@bergerrealty.com
Web: www.bergerrealty.com

Scan to see Property page.



Berger Realty

Since 1926



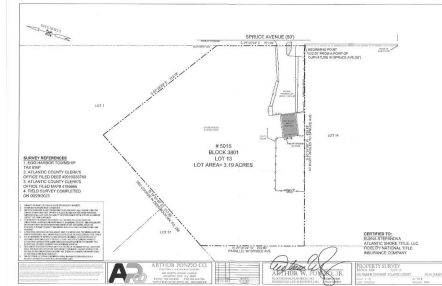
Berger Realty, Inc.
3160 Asbury Avenue
Ocean City, NJ 08226
1-877-237-4371 / 609-399-0076
info@bergerrealty.com



5015 Spruce, Egg Harbor Township, NJ, 08234

Price \$275,000.00

PROPERTY DETAILS



Total Rooms	0
Bedrooms	0
Baths Full	0
Baths Half	0
Year Built	
Type	
Block Number	3801
Listing #	589555
Taxes	5366.00

COMMENTS

Property has over 3 acres of land that can be both residential or commercial. The current building is about 1,500 sq ft that can be used for commercial purposes or build a new home. Offers easy access to Atlantic City & County. Within approximately 4 mile of Parkway & Expressway. Buyer is responsible for all/any approvals from the township. Property is being lot As-Is....

PROPERTY FEATURES

CONTACT

Berger Realty Inc
3160 Asbury Ave.
Ocean City, NJ 08226
Call: (609) 399-0076
Email to: info@bergerrealty.com
Web: www.bergerrealty.com

Scan to see Property page.

