

# Berger Realty

Since 1926



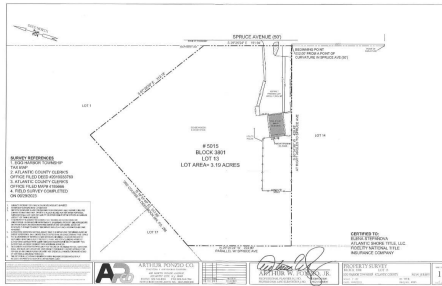
Berger Realty, Inc  
1330 Bay Avenue  
Ocean City, NJ 08226  
609-391-1330/609-391-1300  
info@bergerrealty.com



5015 Spruce, Egg Harbor Township, NJ, 08234

Price \$275,000.00

### PROPERTY DETAILS



Total Rooms	0
Bedrooms	0
Baths Full	0
Baths Half	0
Year Built	
Type	
Block Number	3801
Listing #	589555
Taxes	5366.00

### COMMENTS

Property has over 3 acres of land that can be both residential or commercial. The current building is about 1,500 sq ft that can be used for commercial purposes or build a new home. Offers easy access to Atlantic City & County. Within approximately 4 mile of Parkway & Expressway. Buyer is responsible for all/any approvals from the township. Property is being lot As-Is....

### PROPERTY FEATURES

### CONTACT



Ask for Joan S. Spencer  
Berger Realty Inc  
1330 Bay Avenue, Ocean City  
Call: 609-204-3027  
Email to: jss@bergerrealty.com

Scan to see Property page.



# Berger Realty

Since 1926



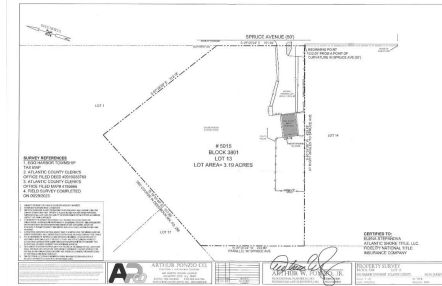
Berger Realty, Inc  
1330 Bay Avenue  
Ocean City, NJ 08226  
609-391-1330/609-391-1300  
info@bergerrealty.com



5015 Spruce, Egg Harbor Township, NJ, 08234

Price \$275,000.00

### PROPERTY DETAILS



Total Rooms	0
Bedrooms	0
Baths Full	0
Baths Half	0
Year Built	
Type	
Block Number	3801
Listing #	589555
Taxes	5366.00

### COMMENTS

Property has over 3 acres of land that can be both residential or commercial. The current building is about 1,500 sq ft that can be used for commercial purposes or build a new home. Offers easy access to Atlantic City & County. Within approximately 4 mile of Parkway & Expressway. Buyer is responsible for all/any approvals from the township. Property is being lot As-Is....

### PROPERTY FEATURES

### CONTACT



Ask for Joan S. Spencer  
Berger Realty Inc  
1330 Bay Avenue, Ocean City  
Call: 609-204-3027  
Email to: jss@bergerrealty.com

Scan to see Property page.

