

Berger Realty

Since 1926



Berger Realty, Inc.
3160 Asbury Avenue
Ocean City, NJ 08226
1-877-237-4371 / 609-399-0076
info@bergerrealty.com



610 Noahs Landing, Unit 203, 203, Pleasantville, NJ, 08232

Price \$136,000.00



PROPERTY DETAILS

Total Rooms	5
Bedrooms	2
Baths Full	1
Baths Half	0
Year Built	1986
Type	Condo
Block Number	11
Listing #	589521
Taxes	1961.00

COMMENTS

Welcome Investors, great location. Near shopping and bus line. Minutes to Atlantic City....

PROPERTY FEATURES

Exterior	ParkingGarage	Heating	Cooling
Vinyl	None	Forced Air	Central
		Gas-Natural	
HotWater	Water	Sewer	
Gas	Public Water	Public Sewer	

CONTACT



Ask for Marki Lyn Warlow
Berger Realty Inc
3160 Asbury Avenue, Ocean City
Call:
Email to: mlw@bergerrealty.com

Scan to see Property page.



Berger Realty

Since 1926



Berger Realty, Inc.
3160 Asbury Avenue
Ocean City, NJ 08226
1-877-237-4371 / 609-399-0076
info@bergerrealty.com



610 Noahs Landing, Unit 203, 203, Pleasantville, NJ, 08232

Price \$136,000.00



PROPERTY DETAILS

Total Rooms	5
Bedrooms	2
Baths Full	1
Baths Half	0
Year Built	1986
Type	Condo
Block Number	11
Listing #	589521
Taxes	1961.00

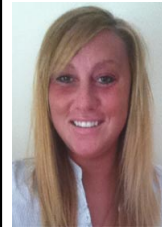
COMMENTS

Welcome Investors, great location. Near shopping and bus line. Minutes to Atlantic City....

PROPERTY FEATURES

Exterior	ParkingGarage	Heating	Cooling
Vinyl	None	Forced Air	Central
		Gas-Natural	
HotWater	Water	Sewer	
Gas	Public Water	Public Sewer	

CONTACT



Ask for Marki Lyn Warlow
Berger Realty Inc
3160 Asbury Avenue, Ocean City
Call:
Email to: mlw@bergerrealty.com

Scan to see Property page.

