

Berger Realty

Since 1926



Berger Realty, Inc.
3160 Asbury Avenue
Ocean City, NJ 08226
1-877-237-4371 / 609-399-0076
info@bergerrealty.com

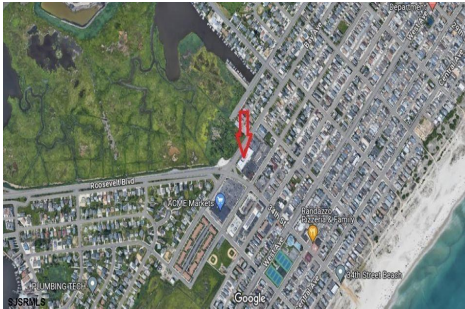


3313-3315 Bay Ave, Ocean City, NJ, 08226

Price \$6,250,000.00

PROPERTY DETAILS

Total Rooms	
Bedrooms	0
Baths Full	0
Baths Half	0
Year Built	
Type	
Block Number	03306
Listing #	589469
Taxes	



COMMENTS

Located at the corner of 34th and Bay Ave in Ocean City, NJ, this property offers a prime real estate opportunity with significant redevelopment potential. Its proximity to The Garden State Parkway enhances its desirability, providing convenient access to transportation and nearby amenities. Ocean City itself is renowned for its beaches and community atmosphere, making it ...

PROPERTY FEATURES

CONTACT



Ask for Michael Devlin
Berger Realty Inc
3160 Asbury Avenue, Ocean City
Call: 609-306-3730
Email to: msd@bergerrealty.com

Scan to see Property page.



Berger Realty

Since 1926



Berger Realty, Inc.
3160 Asbury Avenue
Ocean City, NJ 08226
1-877-237-4371 / 609-399-0076
info@bergerrealty.com



3313-3315 Bay Ave, Ocean City, NJ, 08226

Price \$6,250,000.00

PROPERTY DETAILS

Total Rooms	
Bedrooms	0
Baths Full	0
Baths Half	0
Year Built	
Type	
Block Number	03306
Listing #	589469
Taxes	



COMMENTS

Located at the corner of 34th and Bay Ave in Ocean City, NJ, this property offers a prime real estate opportunity with significant redevelopment potential. Its proximity to The Garden State Parkway enhances its desirability, providing convenient access to transportation and nearby amenities. Ocean City itself is renowned for its beaches and community atmosphere, making it ...

PROPERTY FEATURES

CONTACT



Ask for Michael Devlin
Berger Realty Inc
3160 Asbury Avenue, Ocean City
Call: 609-306-3730
Email to: msd@bergerrealty.com

Scan to see Property page.

