



Berger Realty, Inc.
3160 Asbury Avenue
Ocean City, NJ 08226
1-877-237-4371 / 609-399-0076
info@bergerrealty.com



4090 English Creek, Egg Harbor Township, NJ, 08234

Price \$69,900.00

PROPERTY DETAILS



| | |
|--------------|---------|
| Total Rooms | |
| Bedrooms | 0 |
| Baths Full | 0 |
| Baths Half | 0 |
| Year Built | |
| Type | |
| Block Number | 3401 |
| Listing # | 589389 |
| Taxes | 2226.00 |

COMMENTS

Great opportunity and excellent exposure. This lot provides high visibility for anyone seeking to develop for commercial and or residential purposes. Property was acquired through a tax sale. Buyer to perform all due diligence....

PROPERTY FEATURES

CONTACT



Ask for Patricia Moss
Berger Realty Inc
3160 Asbury Avenue, Ocean City
Call: 609-335-4616
Email to: tcm@bergerrealty.com

Scan to see Property page.



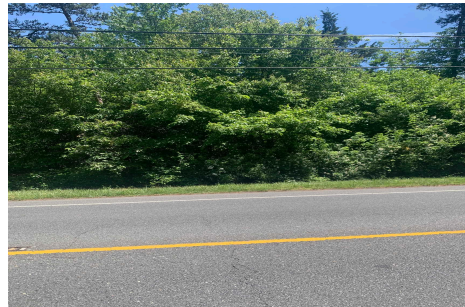
Berger Realty, Inc.
3160 Asbury Avenue
Ocean City, NJ 08226
1-877-237-4371 / 609-399-0076
info@bergerrealty.com



4090 English Creek, Egg Harbor Township, NJ, 08234

Price \$69,900.00

PROPERTY DETAILS



| | |
|--------------|---------|
| Total Rooms | |
| Bedrooms | 0 |
| Baths Full | 0 |
| Baths Half | 0 |
| Year Built | |
| Type | |
| Block Number | 3401 |
| Listing # | 589389 |
| Taxes | 2226.00 |

COMMENTS

Great opportunity and excellent exposure. This lot provides high visibility for anyone seeking to develop for commercial and or residential purposes. Property was acquired through a tax sale. Buyer to perform all due diligence....

PROPERTY FEATURES

CONTACT



Ask for Patricia Moss
Berger Realty Inc
3160 Asbury Avenue, Ocean City
Call: 609-335-4616
Email to: tcm@bergerrealty.com

Scan to see Property page.

