



Berger Realty, Inc.
3160 Asbury Avenue
Ocean City, NJ 08226
1-877-237-4371 / 609-399-0076
info@bergerrealty.com



4090 English Creek, Egg Harbor Township, NJ, 08234

Price \$69,900.00

PROPERTY DETAILS



Total Rooms	
Bedrooms	0
Baths Full	0
Baths Half	0
Year Built	
Type	
Block Number	3401
Listing #	589389
Taxes	2226.00

COMMENTS

Great opportunity and excellent exposure. This lot provides high visibility for anyone seeking to develop for commercial and or residential purposes. Property was acquired through a tax sale. Buyer to perform all due diligence....

PROPERTY FEATURES

CONTACT



Ask for Lauren Greiner
Berger Realty Inc
3160 Asbury Avenue, Ocean City
Call: 609-602-5960
Email to: lmg@bergerrealty.com

Scan to see Property page.



Berger Realty, Inc.
3160 Asbury Avenue
Ocean City, NJ 08226
1-877-237-4371 / 609-399-0076
info@bergerrealty.com



4090 English Creek, Egg Harbor Township, NJ, 08234

Price \$69,900.00

PROPERTY DETAILS



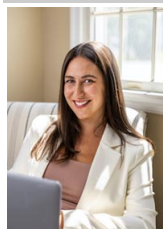
Total Rooms	
Bedrooms	0
Baths Full	0
Baths Half	0
Year Built	
Type	
Block Number	3401
Listing #	589389
Taxes	2226.00

COMMENTS

Great opportunity and excellent exposure. This lot provides high visibility for anyone seeking to develop for commercial and or residential purposes. Property was acquired through a tax sale. Buyer to perform all due diligence....

PROPERTY FEATURES

CONTACT



Ask for Lauren Greiner
Berger Realty Inc
3160 Asbury Avenue, Ocean City
Call: 609-602-5960
Email to: lmg@bergerrealty.com

Scan to see Property page.

