

Berger Realty

Since 1928



Berger Realty, Inc.
3160 Asbury Avenue
Ocean City, NJ 08226
1-877-237-4371 / 609-399-0076
info@bergerrealty.com



6056 Main, Mays Landing, NJ, 08330

Price \$725,000.00

PROPERTY DETAILS

Total Rooms	13
Bedrooms	6
Baths Full	6
Baths Half	1
Year Built	
Type	Single Family
Block Number	742
Listing #	589362
Taxes	7093.00



COMMENTS

Welcome to the Abbott House, a remarkable gem nestled in the Mays Landing Historic District and proudly listed on the National Register of Historic Places. Constructed by Joseph E. P. Abbott in the early to mid-1800s, this stunning residence boasts a blend of Second Empire and Italianate Villa styles. As you approach the home, the inviting front porch welcomes you with a...

PROPERTY FEATURES

Exterior Wood	OutsideFeatures Curbs Patio Paved Road Pool-In Ground Porch Shed Sidewalks	ParkingGarage None	OtherRooms Dining Area Dining Room Eat In Kitchen Laundry/Utility Room
AppliancesIncluded Gas Stove Refrigerator	AlsoIncluded Fireplace Equipment	Basement Outside Entrance Unfinished	Heating Baseboard Electric Hot Water Multi-Zoned
HotWater Tankless-gas	Water Public	Sewer Public Sewer	

CONTACT



Ask for Marki Lyn Warlow
Berger Realty Inc
3160 Asbury Avenue, Ocean City
Call:
Email to: mlw@bergerrealty.com

Scan to see Property page.



Berger Realty

Since 1928



Berger Realty, Inc.
3160 Asbury Avenue
Ocean City, NJ 08226
1-877-237-4371 / 609-399-0076
info@bergerrealty.com



6056 Main, Mays Landing, NJ, 08330

Price \$725,000.00

PROPERTY DETAILS

Total Rooms	13
Bedrooms	6
Baths Full	6
Baths Half	1
Year Built	
Type	Single Family
Block Number	742
Listing #	589362
Taxes	7093.00



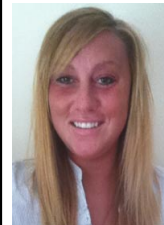
COMMENTS

Welcome to the Abbott House, a remarkable gem nestled in the Mays Landing Historic District and proudly listed on the National Register of Historic Places. Constructed by Joseph E. P. Abbott in the early to mid-1800s, this stunning residence boasts a blend of Second Empire and Italianate Villa styles. As you approach the home, the inviting front porch welcomes you with a...

PROPERTY FEATURES

Exterior Wood	OutsideFeatures Curbs Patio Paved Road Pool-In Ground Porch Shed Sidewalks	ParkingGarage None	OtherRooms Dining Area Dining Room Eat In Kitchen Laundry/Utility Room
AppliancesIncluded Gas Stove Refrigerator	AlsoIncluded Fireplace Equipment	Basement Outside Entrance Unfinished	Heating Baseboard Electric Hot Water Multi-Zoned
HotWater Tankless-gas	Water Public	Sewer Public Sewer	

CONTACT



Ask for Marki Lyn Warlow
Berger Realty Inc
3160 Asbury Avenue, Ocean City
Call:
Email to: mlw@bergerrealty.com

Scan to see Property page.

