

# Berger Realty

Since 1928

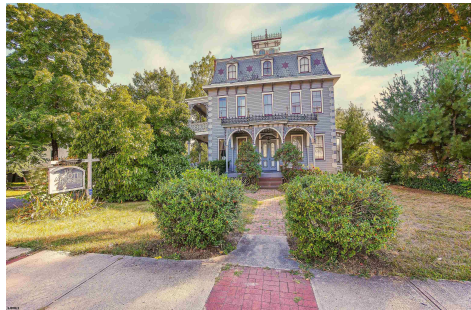


Berger Realty, Inc.  
3160 Asbury Avenue  
Ocean City, NJ 08226  
1-877-237-4371 / 609-399-0076  
info@bergerrealty.com



6056 Main, Mays Landing, NJ, 08330

Price \$725,000.00



### PROPERTY DETAILS

Total Rooms	13
Bedrooms	6
Baths Full	6
Baths Half	1
Year Built	
Type	Single Family
Block Number	742
Listing #	589362
Taxes	7093.00

### COMMENTS

Welcome to the Abbott House, a remarkable gem nestled in the Mays Landing Historic District and proudly listed on the National Register of Historic Places. Constructed by Joseph E. P. Abbott in the early to mid-1800s, this stunning residence boasts a blend of Second Empire and Italianate Villa styles. As you approach the home, the inviting front porch welcomes you with a...

### PROPERTY FEATURES

Exterior Wood	OutsideFeatures Curbs Patio Paved Road Pool-In Ground Porch Shed Sidewalks	ParkingGarage None	OtherRooms Dining Area Dining Room Eat In Kitchen Laundry/Utility Room
AppliancesIncluded Gas Stove Refrigerator	AlsoIncluded Fireplace Equipment	Basement Outside Entrance Unfinished	Heating Baseboard Electric Hot Water Multi-Zoned
HotWater Tankless-gas	Water Public	Sewer Public Sewer	

### CONTACT



Ask for Dori Adams  
Berger Realty Inc  
3160 Asbury Avenue, Ocean City  
Call: 609-602-2545  
Email to: doa@bergerrealty.com

Scan to see Property page.



# Berger Realty

Since 1928



Berger Realty, Inc.  
3160 Asbury Avenue  
Ocean City, NJ 08226  
1-877-237-4371 / 609-399-0076  
info@bergerrealty.com



6056 Main, Mays Landing, NJ, 08330

Price \$725,000.00



### PROPERTY DETAILS

Total Rooms	13
Bedrooms	6
Baths Full	6
Baths Half	1
Year Built	
Type	Single Family
Block Number	742
Listing #	589362
Taxes	7093.00

### COMMENTS

Welcome to the Abbott House, a remarkable gem nestled in the Mays Landing Historic District and proudly listed on the National Register of Historic Places. Constructed by Joseph E. P. Abbott in the early to mid-1800s, this stunning residence boasts a blend of Second Empire and Italianate Villa styles. As you approach the home, the inviting front porch welcomes you with a...

### PROPERTY FEATURES

Exterior Wood	OutsideFeatures Curbs Patio Paved Road Pool-In Ground Porch Shed Sidewalks	ParkingGarage None	OtherRooms Dining Area Dining Room Eat In Kitchen Laundry/Utility Room
AppliancesIncluded Gas Stove Refrigerator	AlsoIncluded Fireplace Equipment	Basement Outside Entrance Unfinished	Heating Baseboard Electric Hot Water Multi-Zoned
HotWater Tankless-gas	Water Public	Sewer Public Sewer	

### CONTACT



Ask for Dori Adams  
Berger Realty Inc  
3160 Asbury Avenue, Ocean City  
Call: 609-602-2545  
Email to: doa@bergerrealty.com

Scan to see Property page.

