



Berger Realty, Inc.
3160 Asbury Avenue
Ocean City, NJ 08226
1-877-237-4371 / 609-399-0076
info@bergerrealty.com



2304 Route 9, Cape May Court House, NJ, 08210

Price \$899,900.00



PROPERTY DETAILS

Total Rooms	
Bedrooms	0
Baths Full	0
Baths Half	0
Year Built	
Type	
Block Number	253.03
Listing #	589294
Taxes	6962.00

COMMENTS

Potential Development Opportunity! Two adjacent Lots Available in Dennis Twp. 2304 and 2316 N. Route 9, approximately 21 acres with a pond on the property. Within a few miles to Avalon, Sea Isle and Stone Harbor. All approvals, inspections and applications needed are the responsibility of the buyer....

PROPERTY FEATURES

CONTACT

Ask for David Collins
Berger Realty Inc
3160 Asbury Avenue, Ocean City
Call:
Email to: dac@bergerrealty.com

Scan to see Property page.

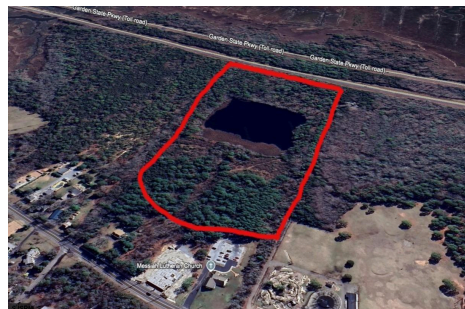


Berger Realty, Inc.
3160 Asbury Avenue
Ocean City, NJ 08226
1-877-237-4371 / 609-399-0076
info@bergerrealty.com



2304 Route 9, Cape May Court House, NJ, 08210

Price \$899,900.00



PROPERTY DETAILS

Total Rooms	
Bedrooms	0
Baths Full	0
Baths Half	0
Year Built	
Type	
Block Number	253.03
Listing #	589294
Taxes	6962.00

COMMENTS

Potential Development Opportunity! Two adjacent Lots Available in Dennis Twp. 2304 and 2316 N. Route 9, approximately 21 acres with a pond on the property. Within a few miles to Avalon, Sea Isle and Stone Harbor. All approvals, inspections and applications needed are the responsibility of the buyer....

PROPERTY FEATURES

CONTACT

Ask for David Collins
Berger Realty Inc
3160 Asbury Avenue, Ocean City
Call:
Email to: dac@bergerrealty.com

Scan to see Property page.

