

Berger Realty

Since 1926



Berger Realty, Inc.
3160 Asbury Avenue
Ocean City, NJ 08226
1-877-237-4371 / 609-399-0076
info@bergerrealty.com



297 Pebble Beach Dr, Mays Landing, NJ, 08330

Price \$249,900.00

PROPERTY DETAILS

Total Rooms	5
Bedrooms	2
Baths Full	2
Baths Half	0
Year Built	2001
Type	Mobile Home w/o Land
Block Number	
Listing #	589270
Taxes	



COMMENTS

When arriving at this cozy home be greeted by a new concrete driveway and beach grass landscape; accenting the new entry porch and updated half garage. The open floor plan captivates as architectural designs of both cathedral ceilings and windows allow abundant natural light to transform the space. Featured common areas include new flooring, center island, new appliance...

PROPERTY FEATURES

ParkingGarage	Heating	Water	Sewer
None	Forced Air	Public	Public Sewer

CONTACT



Ask for Marki Lyn Warlow
Berger Realty Inc
3160 Asbury Avenue, Ocean City
Call:
Email to: mlw@bergerrealty.com

Scan to see Property page.



Berger Realty

Since 1926



Berger Realty, Inc.
3160 Asbury Avenue
Ocean City, NJ 08226
1-877-237-4371 / 609-399-0076
info@bergerrealty.com



297 Pebble Beach Dr, Mays Landing, NJ, 08330

Price \$249,900.00

PROPERTY DETAILS

Total Rooms	5
Bedrooms	2
Baths Full	2
Baths Half	0
Year Built	2001
Type	Mobile Home w/o Land
Block Number	
Listing #	589270
Taxes	



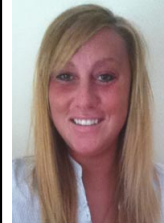
COMMENTS

When arriving at this cozy home be greeted by a new concrete driveway and beach grass landscape; accenting the new entry porch and updated half garage. The open floor plan captivates as architectural designs of both cathedral ceilings and windows allow abundant natural light to transform the space. Featured common areas include new flooring, center island, new appliance...

PROPERTY FEATURES

ParkingGarage	Heating	Water	Sewer
None	Forced Air	Public	Public Sewer

CONTACT



Ask for Marki Lyn Warlow
Berger Realty Inc
3160 Asbury Avenue, Ocean City
Call:
Email to: mlw@bergerrealty.com

Scan to see Property page.

