

# Berger Realty

Since 1926



Berger Realty, Inc.  
3160 Asbury Avenue  
Ocean City, NJ 08226  
1-877-237-4371 / 609-399-0076  
info@bergerrealty.com



408 BETHEL ROAD, Somers Point, NJ, 08244

Price \$195,000.00

### PROPERTY DETAILS

|              |         |
|--------------|---------|
| Total Rooms  |         |
| Bedrooms     | 0       |
| Baths Full   | 0       |
| Baths Half   | 0       |
| Year Built   |         |
| Type         |         |
| Block Number | 813     |
| Listing #    | 589183  |
| Taxes        | 7080.00 |

### COMMENTS

**GREAT SOMERS POINT LOCATION IN POINT COMMONS! 1920 SQ FT 2ND FLOOR LOCATION FOR PROFESSIONAL OR MEDICAL OFFICES IS READY TO OCCUPY WITH 2 WAITING ROOMS, CONFERENCE ROOM, 4 OFFICE OR EXAM ROOMS, KITCHEN, 2 RESTROOMS, ELEVATOR, 2 STAIRCASES AND MORE! OUTSTANDING CENTRAL SOMERS POINT LOCATION MINUTES FROM PRIME MAINLAND COMMUNITIES AND SHORE TOWNS!...**

### PROPERTY FEATURES

|                        |   |                                    |  |
|------------------------|---|------------------------------------|--|
| Exterior<br>Frame/Wood | OutsideFeatures<br>Security Light/System Sign | ParkingGarage<br>11 or More Spaces | InteriorFeatures<br>Elevator Pass<br>Restroom<br>Storage |
| Heating<br>Electric    | Cooling<br>Central                            | HotWater<br>Electric               | Water<br>Public  |
| Sewer<br>Public Sewer  |   |                                    |  |

### CONTACT



Ask for Joyce McMahon  
Berger Realty Inc  
3160 Asbury Avenue, Ocean City  
Call:  
Email to: [jmm@bergerrealty.com](mailto:jmm@bergerrealty.com)

Scan to see Property page.



# Berger Realty

Since 1926



Berger Realty, Inc.  
3160 Asbury Avenue  
Ocean City, NJ 08226  
1-877-237-4371 / 609-399-0076  
info@bergerrealty.com



408 BETHEL ROAD, Somers Point, NJ, 08244

Price \$195,000.00

### PROPERTY DETAILS

|              |         |
|--------------|---------|
| Total Rooms  |         |
| Bedrooms     | 0       |
| Baths Full   | 0       |
| Baths Half   | 0       |
| Year Built   |         |
| Type         |         |
| Block Number | 813     |
| Listing #    | 589183  |
| Taxes        | 7080.00 |

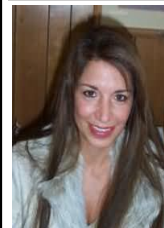
### COMMENTS

**GREAT SOMERS POINT LOCATION IN POINT COMMONS! 1920 SQ FT 2ND FLOOR LOCATION FOR PROFESSIONAL OR MEDICAL OFFICES IS READY TO OCCUPY WITH 2 WAITING ROOMS, CONFERENCE ROOM, 4 OFFICE OR EXAM ROOMS, KITCHEN, 2 RESTROOMS, ELEVATOR, 2 STAIRCASES AND MORE! OUTSTANDING CENTRAL SOMERS POINT LOCATION MINUTES FROM PRIME MAINLAND COMMUNITIES AND SHORE TOWNS!...**

### PROPERTY FEATURES

|                        |   |                                    |  |
|------------------------|---|------------------------------------|--|
| Exterior<br>Frame/Wood | OutsideFeatures<br>Security Light/System Sign | ParkingGarage<br>11 or More Spaces | InteriorFeatures<br>Elevator Pass<br>Restroom<br>Storage |
| Heating<br>Electric    | Cooling<br>Central                            | HotWater<br>Electric               | Water<br>Public  |
| Sewer<br>Public Sewer  |   |                                    |  |

### CONTACT



Ask for Joyce McMahon  
Berger Realty Inc  
3160 Asbury Avenue, Ocean City  
Call:  
Email to: [jmm@bergerrealty.com](mailto:jmm@bergerrealty.com)

Scan to see Property page.

