

Berger Realty

Since 1926



Ocean 17
1670 Boardwalk
Ocean City, NJ 08226
609-391-0500
oc17@BergerRealty.com



408 BETHEL ROAD, Somers Point, NJ, 08244

Price \$195,000.00

PROPERTY DETAILS

Total Rooms	
Bedrooms	0
Baths Full	0
Baths Half	0
Year Built	
Type	
Block Number	813
Listing #	589183
Taxes	7080.00

COMMENTS

GREAT SOMERS POINT LOCATION IN POINT COMMONS! 1920 SQ FT 2ND FLOOR LOCATION FOR PROFESSIONAL OR MEDICAL OFFICES IS READY TO OCCUPY WITH 2 WAITING ROOMS, CONFERENCE ROOM, 4 OFFICE OR EXAM ROOMS, KITCHEN, 2 RESTROOMS, ELEVATOR, 2 STAIRCASES AND MORE! OUTSTANDING CENTRAL SOMERS POINT LOCATION MINUTES FROM PRIME MAINLAND COMMUNITIES AND SHORE TOWNS!...

PROPERTY FEATURES

Exterior Frame/Wood	OutsideFeatures Security Light/System Sign	ParkingGarage 11 or More Spaces	InteriorFeatures Elevator Pass Restroom Storage
Heating Electric	Cooling Central	HotWater Electric	Water Public
Sewer Public Sewer			

CONTACT



Ask for Dylan Perry
Berger Realty Inc
1670 Boardwalk, Ocean City
Call: 609-675-6737
Email to: dcp@bergerrealty.com

Scan to see Property page.



Berger Realty

Since 1926



Ocean 17
1670 Boardwalk
Ocean City, NJ 08226
609-391-0500
oc17@BergerRealty.com



408 BETHEL ROAD, Somers Point, NJ, 08244

Price \$195,000.00

PROPERTY DETAILS

Total Rooms	
Bedrooms	0
Baths Full	0
Baths Half	0
Year Built	
Type	
Block Number	813
Listing #	589183
Taxes	7080.00

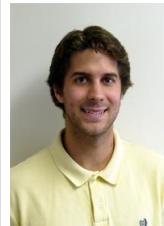
COMMENTS

GREAT SOMERS POINT LOCATION IN POINT COMMONS! 1920 SQ FT 2ND FLOOR LOCATION FOR PROFESSIONAL OR MEDICAL OFFICES IS READY TO OCCUPY WITH 2 WAITING ROOMS, CONFERENCE ROOM, 4 OFFICE OR EXAM ROOMS, KITCHEN, 2 RESTROOMS, ELEVATOR, 2 STAIRCASES AND MORE! OUTSTANDING CENTRAL SOMERS POINT LOCATION MINUTES FROM PRIME MAINLAND COMMUNITIES AND SHORE TOWNS!...

PROPERTY FEATURES

Exterior Frame/Wood	OutsideFeatures Security Light/System Sign	ParkingGarage 11 or More Spaces	InteriorFeatures Elevator Pass Restroom Storage
Heating Electric	Cooling Central	HotWater Electric	Water Public
Sewer Public Sewer			

CONTACT



Ask for Dylan Perry
Berger Realty Inc
1670 Boardwalk, Ocean City
Call: 609-675-6737
Email to: dcp@bergerrealty.com

Scan to see Property page.

