

Berger Realty

Since 1926

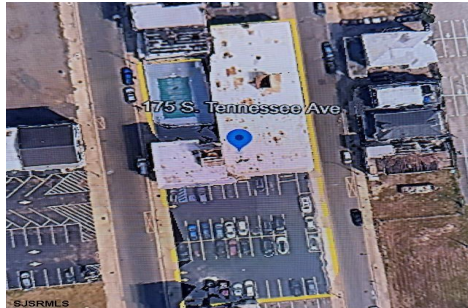


Berger Realty, Inc.
3160 Asbury Avenue
Ocean City, NJ 08226
1-877-237-4371 / 609-399-0076
info@bergerrealty.com



175 Tennessee Ave, Atlantic City, NJ, 08401

Price \$3,000,000.00



PROPERTY DETAILS

Total Rooms	0
Bedrooms	0
Baths Full	0
Baths Half	0
Year Built	
Type	
Block Number	54
Listing #	589171
Taxes	84583.00

COMMENTS

A very rare opportunity to own a beachblock property with a long term land lease in place. Land lease tenant is the Super 8 Hotel along with certain parking lots. Lease is NNN and this is a prime investment for a 1031 exchange buyer. The addresses being sold are: 175, 181 and 187 South Tennessee Ave and 140, 142, 150, 154 and 158 South Ocean Avenue. For additional informat...

PROPERTY FEATURES

CONTACT



Ask for J.K. Hepner, III
Berger Realty Inc
3160 Asbury Avenue, Ocean City
Call: 609-457-9457
Email to: jkh@bergerrealty.com

Scan to see Property page.



Berger Realty

Since 1926

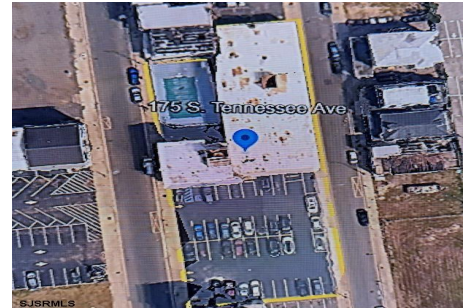


Berger Realty, Inc.
3160 Asbury Avenue
Ocean City, NJ 08226
1-877-237-4371 / 609-399-0076
info@bergerrealty.com



175 Tennessee Ave, Atlantic City, NJ, 08401

Price \$3,000,000.00



PROPERTY DETAILS

Total Rooms	0
Bedrooms	0
Baths Full	0
Baths Half	0
Year Built	
Type	
Block Number	54
Listing #	589171
Taxes	84583.00

COMMENTS

A very rare opportunity to own a beachblock property with a long term land lease in place. Land lease tenant is the Super 8 Hotel along with certain parking lots. Lease is NNN and this is a prime investment for a 1031 exchange buyer. The addresses being sold are: 175, 181 and 187 South Tennessee Ave and 140, 142, 150, 154 and 158 South Ocean Avenue. For additional informat...

PROPERTY FEATURES

CONTACT



Ask for J.K. Hepner, III
Berger Realty Inc
3160 Asbury Avenue, Ocean City
Call: 609-457-9457
Email to: jkh@bergerrealty.com

Scan to see Property page.

