

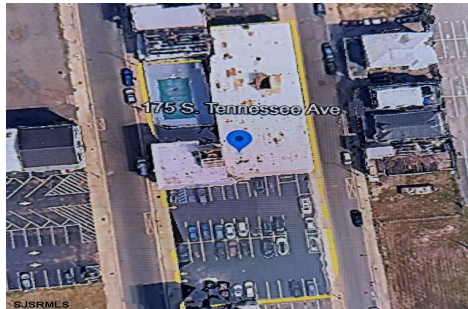


Berger Realty, Inc.  
3160 Asbury Avenue  
Ocean City, NJ 08226  
1-877-237-4371 / 609-399-0076  
info@bergerrealty.com



175 Tennessee Ave, Atlantic City, NJ, 08401

Price \$3,000,000.00



#### PROPERTY DETAILS

Total Rooms	
Bedrooms	0
Baths Full	0
Baths Half	0
Year Built	
Type	
Block Number	54
Listing #	589171
Taxes	84583.00

#### COMMENTS

*A very rare opportunity to own a beachblock property with a long term land lease in place. Land lease tenant is the Super 8 Hotel along with certain parking lots. Lease is NNN and this is a prime investment for a 1031 exchange buyer. The addresses being sold are: 175, 181 and 187 South Tennessee Ave and 140, 142, 150, 154 and 158 South Ocean Avenue. For additional informat...*

#### PROPERTY FEATURES

#### CONTACT



Ask for Dori Adams  
Berger Realty Inc  
3160 Asbury Avenue, Ocean City  
Call: 609-602-2545  
Email to: doa@bergerrealty.com

Scan to see Property page.



Berger Realty, Inc.  
3160 Asbury Avenue  
Ocean City, NJ 08226  
1-877-237-4371 / 609-399-0076  
info@bergerrealty.com



175 Tennessee Ave, Atlantic City, NJ, 08401

Price \$3,000,000.00



#### PROPERTY DETAILS

Total Rooms	
Bedrooms	0
Baths Full	0
Baths Half	0
Year Built	
Type	
Block Number	54
Listing #	589171
Taxes	84583.00

#### COMMENTS

*A very rare opportunity to own a beachblock property with a long term land lease in place. Land lease tenant is the Super 8 Hotel along with certain parking lots. Lease is NNN and this is a prime investment for a 1031 exchange buyer. The addresses being sold are: 175, 181 and 187 South Tennessee Ave and 140, 142, 150, 154 and 158 South Ocean Avenue. For additional informat...*

#### PROPERTY FEATURES

#### CONTACT



Ask for Dori Adams  
Berger Realty Inc  
3160 Asbury Avenue, Ocean City  
Call: 609-602-2545  
Email to: doa@bergerrealty.com

Scan to see Property page.

