



Berger Realty, Inc.
3160 Asbury Avenue
Ocean City, NJ 08226
1-877-237-4371 / 609-399-0076
info@bergerrealty.com



221 87th St, 202, Sea Isle City, NJ, 08243

Price \$595,000.00



PROPERTY DETAILS

Total Rooms	5
Bedrooms	2
Baths Full	1
Baths Half	0
Year Built	
Type	Condo
Block Number	87.03
Listing #	589015
Taxes	1834.00

COMMENTS

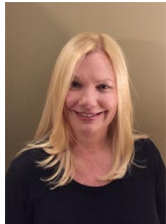
Plan your escape to Sea Isle City! This cozy, newly renovated, and well-maintained Townsend's Inlet condo features two bedrooms and one bath, blending style and function seamlessly. Leave your car in the off-street dedicated parking space and enjoy a short walk to the beach, bay, restaurants, markets, and food shops. The seasonally guarded 85th Street beach is convenient...

PROPERTY FEATURES

ParkingGarage	Heating	Cooling	Water
None	Electric Forced Air	Central	Public Water

Sewer
Public Sewer

CONTACT



Ask for Dawn Warren
Berger Realty Inc
3160 Asbury Avenue, Ocean City
Call: 609-432-4966
Email to: dew@bergerrealty.com

Scan to see Property page.



Berger Realty, Inc.
3160 Asbury Avenue
Ocean City, NJ 08226
1-877-237-4371 / 609-399-0076
info@bergerrealty.com



221 87th St, 202, Sea Isle City, NJ, 08243

Price \$595,000.00



PROPERTY DETAILS

Total Rooms	5
Bedrooms	2
Baths Full	1
Baths Half	0
Year Built	
Type	Condo
Block Number	87.03
Listing #	589015
Taxes	1834.00

COMMENTS

Plan your escape to Sea Isle City! This cozy, newly renovated, and well-maintained Townsend's Inlet condo features two bedrooms and one bath, blending style and function seamlessly. Leave your car in the off-street dedicated parking space and enjoy a short walk to the beach, bay, restaurants, markets, and food shops. The seasonally guarded 85th Street beach is convenient...

PROPERTY FEATURES

ParkingGarage	Heating	Cooling	Water
None	Electric Forced Air	Central	Public Water

Sewer
Public Sewer

CONTACT



Ask for Dawn Warren
Berger Realty Inc
3160 Asbury Avenue, Ocean City
Call: 609-432-4966
Email to: dew@bergerrealty.com

Scan to see Property page.

