

Berger Realty

Since 1926



Berger Realty, Inc.
3160 Asbury Avenue
Ocean City, NJ 08226
1-877-237-4371 / 609-399-0076
info@bergerrealty.com



668 New Road, Somers Point, NJ, 08244

Price \$650,000.00

PROPERTY DETAILS

Total Rooms	
Bedrooms	0
Baths Full	0
Baths Half	0
Year Built	1965
Type	
Block Number	1422
Listing #	588979
Taxes	19085.00

COMMENTS

Prime corner location on Route 9 in Somers Point, NJ. This retail property, built in 1965, features a service station with a two-bay garage and gas station. The building offers a gross leasable area of 1,564 SF on a single floor and is set on 0.43 acres. It includes 15 surface parking spaces and is zoned HC-1. The property is currently vacant and presents various opportuni...

PROPERTY FEATURES

CONTACT



Ask for Margarita Kobilianets
Berger Realty Inc
3160 Asbury Avenue, Ocean City
Call: 609-674-3417
Email to: mak@bergerrealty.com

Scan to see Property page.



Berger Realty

Since 1926



Berger Realty, Inc.
3160 Asbury Avenue
Ocean City, NJ 08226
1-877-237-4371 / 609-399-0076
info@bergerrealty.com



668 New Road, Somers Point, NJ, 08244

Price \$650,000.00

PROPERTY DETAILS

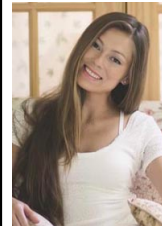
Total Rooms	
Bedrooms	0
Baths Full	0
Baths Half	0
Year Built	1965
Type	
Block Number	1422
Listing #	588979
Taxes	19085.00

COMMENTS

Prime corner location on Route 9 in Somers Point, NJ. This retail property, built in 1965, features a service station with a two-bay garage and gas station. The building offers a gross leasable area of 1,564 SF on a single floor and is set on 0.43 acres. It includes 15 surface parking spaces and is zoned HC-1. The property is currently vacant and presents various opportuni...

PROPERTY FEATURES

CONTACT



Ask for Margarita Kobilianets
Berger Realty Inc
3160 Asbury Avenue, Ocean City
Call: 609-674-3417
Email to: mak@bergerrealty.com

Scan to see Property page.

