

Berger Realty

Since 1926



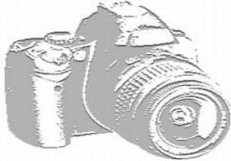
Berger Realty, Inc.
3160 Asbury Avenue
Ocean City, NJ 08226
1-877-237-4371 / 609-399-0076
info@bergerrealty.com



5058 Ivins, Egg Harbor Township, NJ, 08234

Price \$70,000.00

PHOTO NOT AVAILABLE



PROPERTY DETAILS

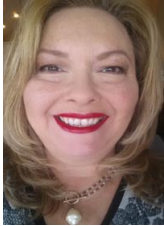
Total Rooms	
Bedrooms	0
Baths Full	0
Baths Half	0
Year Built	
Type	
Block Number	04101
Listing #	588957
Taxes	1329.00

COMMENTS

Seize a remarkable opportunity with this expansive 4.86-acre unimproved parcel of land in the desirable Egg Harbor Township, Atlantic County. This versatile property is a blank canvas, offering limitless possibilities for development or investment in one of New Jersey's thriving communities. Key Features: Size: 4.86 Acres Location: Conveniently situated in Egg Harbor Town...

PROPERTY FEATURES

CONTACT



Ask for Theresa Maina
Berger Realty Inc
3160 Asbury Avenue, Ocean City
Call: 609-703-7725
Email to: tam@bergerrealty.com

Scan to see Property page.



Berger Realty

Since 1926



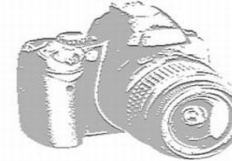
Berger Realty, Inc.
3160 Asbury Avenue
Ocean City, NJ 08226
1-877-237-4371 / 609-399-0076
info@bergerrealty.com



5058 Ivins, Egg Harbor Township, NJ, 08234

Price \$70,000.00

PHOTO NOT AVAILABLE



PROPERTY DETAILS

Total Rooms	
Bedrooms	0
Baths Full	0
Baths Half	0
Year Built	
Type	
Block Number	04101
Listing #	588957
Taxes	1329.00

COMMENTS

Seize a remarkable opportunity with this expansive 4.86-acre unimproved parcel of land in the desirable Egg Harbor Township, Atlantic County. This versatile property is a blank canvas, offering limitless possibilities for development or investment in one of New Jersey's thriving communities. Key Features: Size: 4.86 Acres Location: Conveniently situated in Egg Harbor Town...

PROPERTY FEATURES

CONTACT



Ask for Theresa Maina
Berger Realty Inc
3160 Asbury Avenue, Ocean City
Call: 609-703-7725
Email to: tam@bergerrealty.com

Scan to see Property page.

