

# Berger Realty

Since 1926



Berger Realty, Inc.  
3160 Asbury Avenue  
Ocean City, NJ 08226  
1-877-237-4371 / 609-399-0076  
info@bergerrealty.com



7009 BLACK HORSE PIKE, Egg Harbor Township, NJ, 08232

Price \$119,900.00

### PROPERTY DETAILS



Total Rooms	
Bedrooms	0
Baths Full	0
Baths Half	0
Year Built	
Type	
Block Number	4209
Listing #	588920
Taxes	2963.00

### COMMENTS

*LARGE HALF ACRE RESIDENTIAL OR COMMERCIAL SITE WITH 200 FT OF HIGHWAY FRONTAGE FROM STREET TO STREET (BETWEEN TOULON AND GENOA AVENUES) CAN BE SUBDIVIDED INTO 3-4 BUILDING LOTS OR WOULD BE GREAT COMMERCIAL LOCATION WITH 200 FT OF HIGHWAY FRONTAGE. ALSO HAD PRIOR NON PROFIT APPROVAL....*

### PROPERTY FEATURES

### CONTACT



Ask for Marki Lyn Warlow  
Berger Realty Inc  
3160 Asbury Avenue, Ocean City  
Call:  
Email to: mlw@bergerrealty.com

Scan to see Property page.



# Berger Realty

Since 1926



Berger Realty, Inc.  
3160 Asbury Avenue  
Ocean City, NJ 08226  
1-877-237-4371 / 609-399-0076  
info@bergerrealty.com



7009 BLACK HORSE PIKE, Egg Harbor Township, NJ, 08232

Price \$119,900.00

### PROPERTY DETAILS



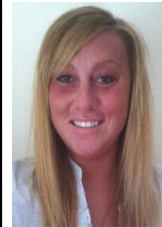
Total Rooms	
Bedrooms	0
Baths Full	0
Baths Half	0
Year Built	
Type	
Block Number	4209
Listing #	588920
Taxes	2963.00

### COMMENTS

*LARGE HALF ACRE RESIDENTIAL OR COMMERCIAL SITE WITH 200 FT OF HIGHWAY FRONTAGE FROM STREET TO STREET (BETWEEN TOULON AND GENOA AVENUES) CAN BE SUBDIVIDED INTO 3-4 BUILDING LOTS OR WOULD BE GREAT COMMERCIAL LOCATION WITH 200 FT OF HIGHWAY FRONTAGE. ALSO HAD PRIOR NON PROFIT APPROVAL....*

### PROPERTY FEATURES

### CONTACT



Ask for Marki Lyn Warlow  
Berger Realty Inc  
3160 Asbury Avenue, Ocean City  
Call:  
Email to: mlw@bergerrealty.com

Scan to see Property page.

