

Berger Realty

Since 1926



Ocean 17
1670 Boardwalk
Ocean City, NJ 08226
609-391-0500

oc17@BergerRealty.com



7009 BLACK HORSE PIKE, Egg Harbor Township, NJ, 08232

Price \$119,900.00

PROPERTY DETAILS



Total Rooms	
Bedrooms	0
Baths Full	0
Baths Half	0
Year Built	
Type	
Block Number	4209
Listing #	588920
Taxes	2963.00

COMMENTS

LARGE HALF ACRE RESIDENTIAL OR COMMERCIAL SITE WITH 200 FT OF HIGHWAY FRONTAGE FROM STREET TO STREET (BETWEEN TOULON AND GENOA AVENUES) CAN BE SUBDIVIDED INTO 3-4 BUILDING LOTS OR WOULD BE GREAT COMMERCIAL LOCATION WITH 200 FT OF HIGHWAY FRONTAGE. ALSO HAD PRIOR NON PROFIT APPROVAL....

PROPERTY FEATURES

CONTACT



Ask for Dylan Perry
Berger Realty Inc
1670 Boardwalk, Ocean City
Call: 609-675-6737
Email to: dcp@bergerrealty.com

Scan to see Property page.



Berger Realty

Since 1926



Ocean 17
1670 Boardwalk
Ocean City, NJ 08226
609-391-0500

oc17@BergerRealty.com



7009 BLACK HORSE PIKE, Egg Harbor Township, NJ, 08232

Price \$119,900.00

PROPERTY DETAILS



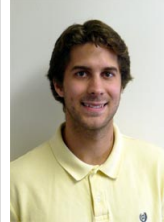
Total Rooms	
Bedrooms	0
Baths Full	0
Baths Half	0
Year Built	
Type	
Block Number	4209
Listing #	588920
Taxes	2963.00

COMMENTS

LARGE HALF ACRE RESIDENTIAL OR COMMERCIAL SITE WITH 200 FT OF HIGHWAY FRONTAGE FROM STREET TO STREET (BETWEEN TOULON AND GENOA AVENUES) CAN BE SUBDIVIDED INTO 3-4 BUILDING LOTS OR WOULD BE GREAT COMMERCIAL LOCATION WITH 200 FT OF HIGHWAY FRONTAGE. ALSO HAD PRIOR NON PROFIT APPROVAL....

PROPERTY FEATURES

CONTACT



Ask for Dylan Perry
Berger Realty Inc
1670 Boardwalk, Ocean City
Call: 609-675-6737
Email to: dcp@bergerrealty.com

Scan to see Property page.

