

# Berger Realty

Since 1928



Berger Realty, Inc.  
3160 Asbury Avenue  
Ocean City, NJ 08226  
1-877-237-4371 / 609-399-0076  
info@bergerrealty.com



2163 Ocean Heights, Egg Harbor Township, NJ, 08244

Price \$799,500.00

### PROPERTY DETAILS

Total Rooms	
Bedrooms	0
Baths Full	0
Baths Half	0
Year Built	
Type	
Block Number	6101
Listing #	588892
Taxes	6398.00

### COMMENTS

Tons of potential here ..18.7 acres ....The property has over 1,150 linear feet of frontage on a busy highway with the annual traffic count being extremely high on an average of 17,000 per day. The site may be used in a broad number of ways some of which are professional offices, retail , restaurants, etc. The-parcel is rectangular in shape. It is located near several esta...

### PROPERTY FEATURES

### CONTACT



Ask for Marki Lyn Warlow  
Berger Realty Inc  
3160 Asbury Avenue, Ocean City  
Call:  
Email to: mlw@bergerrealty.com

Scan to see Property page.



# Berger Realty

Since 1928



Berger Realty, Inc.  
3160 Asbury Avenue  
Ocean City, NJ 08226  
1-877-237-4371 / 609-399-0076  
info@bergerrealty.com



2163 Ocean Heights, Egg Harbor Township, NJ, 08244

Price \$799,500.00

### PROPERTY DETAILS

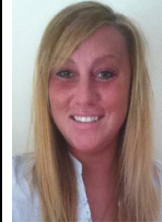
Total Rooms	
Bedrooms	0
Baths Full	0
Baths Half	0
Year Built	
Type	
Block Number	6101
Listing #	588892
Taxes	6398.00

### COMMENTS

Tons of potential here ..18.7 acres ....The property has over 1,150 linear feet of frontage on a busy highway with the annual traffic count being extremely high on an average of 17,000 per day. The site may be used in a broad number of ways some of which are professional offices, retail , restaurants, etc. The-parcel is rectangular in shape. It is located near several esta...

### PROPERTY FEATURES

### CONTACT



Ask for Marki Lyn Warlow  
Berger Realty Inc  
3160 Asbury Avenue, Ocean City  
Call:  
Email to: mlw@bergerrealty.com

Scan to see Property page.

