

Berger Realty

Since 1928



Berger Realty, Inc.
3160 Asbury Avenue
Ocean City, NJ 08226
1-877-237-4371 / 609-399-0076
info@bergerrealty.com



2163 Ocean Heights, Egg Harbor Township, NJ, 08244

Price \$799,500.00

PROPERTY DETAILS

Total Rooms	
Bedrooms	0
Baths Full	0
Baths Half	0
Year Built	
Type	
Block Number	6101
Listing #	588892
Taxes	6398.00

COMMENTS

Tons of potential here ..18.7 acresThe property has over 1,150 linear feet of frontage on a busy highway with the annual traffic count being extremely high on an average of 17,000 per day. The site may be used in a broad number of ways some of which are professional offices, retail , restaurants, etc. The-parcel is rectangular in shape. It is located near several esta...

PROPERTY FEATURES

CONTACT



Ask for Margarita Kobilianets
Berger Realty Inc
3160 Asbury Avenue, Ocean City
Call: 609-674-3417
Email to: mak@bergerrealty.com

Scan to see Property page.



Berger Realty

Since 1928



Berger Realty, Inc.
3160 Asbury Avenue
Ocean City, NJ 08226
1-877-237-4371 / 609-399-0076
info@bergerrealty.com



2163 Ocean Heights, Egg Harbor Township, NJ, 08244

Price \$799,500.00

PROPERTY DETAILS

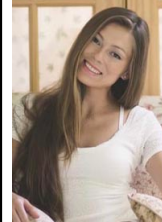
Total Rooms	
Bedrooms	0
Baths Full	0
Baths Half	0
Year Built	
Type	
Block Number	6101
Listing #	588892
Taxes	6398.00

COMMENTS

Tons of potential here ..18.7 acresThe property has over 1,150 linear feet of frontage on a busy highway with the annual traffic count being extremely high on an average of 17,000 per day. The site may be used in a broad number of ways some of which are professional offices, retail , restaurants, etc. The-parcel is rectangular in shape. It is located near several esta...

PROPERTY FEATURES

CONTACT



Ask for Margarita Kobilianets
Berger Realty Inc
3160 Asbury Avenue, Ocean City
Call: 609-674-3417
Email to: mak@bergerrealty.com

Scan to see Property page.

