

# Berger Realty

Since 1928



Berger Realty, Inc.  
3160 Asbury Avenue  
Ocean City, NJ 08226  
1-877-237-4371 / 609-399-0076  
info@bergerrealty.com



136 Crescent, Ocean City, NJ, 08226

Price \$1,299,000.00

### PROPERTY DETAILS

Total Rooms	0
Bedrooms	0
Baths Full	0
Baths Half	0
Year Built	1932
Type	Single Family
Block Number	70.16
Listing #	588890
Taxes	3499.00

### COMMENTS

Plans are available for a 4 Bedroom Single Family home up to approximately 3,000 square feet....

### PROPERTY FEATURES

ParkingGarage	Heating	Water	Sewer
None	None	Public	Public Sewer

### CONTACT



Ask for Marki Lyn Warlow  
Berger Realty Inc  
3160 Asbury Avenue, Ocean City  
Call:  
Email to: mlw@bergerrealty.com

Scan to see Property page.



# Berger Realty

Since 1928



Berger Realty, Inc.  
3160 Asbury Avenue  
Ocean City, NJ 08226  
1-877-237-4371 / 609-399-0076  
info@bergerrealty.com



136 Crescent, Ocean City, NJ, 08226

Price \$1,299,000.00

### PROPERTY DETAILS

Total Rooms	0
Bedrooms	0
Baths Full	0
Baths Half	0
Year Built	1932
Type	Single Family
Block Number	70.16
Listing #	588890
Taxes	3499.00

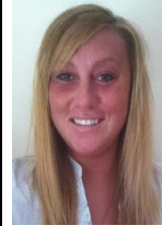
### COMMENTS

Plans are available for a 4 Bedroom Single Family home up to approximately 3,000 square feet....

### PROPERTY FEATURES

ParkingGarage	Heating	Water	Sewer
None	None	Public	Public Sewer

### CONTACT



Ask for Marki Lyn Warlow  
Berger Realty Inc  
3160 Asbury Avenue, Ocean City  
Call:  
Email to: mlw@bergerrealty.com

Scan to see Property page.

