

Berger Realty

Since 1928



Berger Realty, Inc.
3160 Asbury Avenue
Ocean City, NJ 08226
1-877-237-4371 / 609-399-0076
info@bergerrealty.com



136 Crescent, Ocean City, NJ, 08226

Price \$1,299,000.00

PROPERTY DETAILS

Total Rooms	0
Bedrooms	0
Baths Full	0
Baths Half	0
Year Built	1932
Type	Single Family
Block Number	70.16
Listing #	588890
Taxes	3499.00



COMMENTS

Plans are available for a 4 Bedroom Single Family home up to approximately 3,000 square feet....

PROPERTY FEATURES

ParkingGarage	Heating	Water	Sewer
None	None	Public	Public Sewer

CONTACT



Ask for Joyce McMahon
Berger Realty Inc
3160 Asbury Avenue, Ocean City
Call:
Email to: jmm@bergerrealty.com

Scan to see Property page.



Berger Realty

Since 1928



Berger Realty, Inc.
3160 Asbury Avenue
Ocean City, NJ 08226
1-877-237-4371 / 609-399-0076
info@bergerrealty.com



136 Crescent, Ocean City, NJ, 08226

Price \$1,299,000.00

PROPERTY DETAILS

Total Rooms	0
Bedrooms	0
Baths Full	0
Baths Half	0
Year Built	1932
Type	Single Family
Block Number	70.16
Listing #	588890
Taxes	3499.00



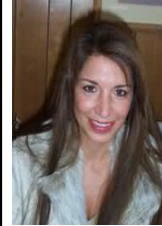
COMMENTS

Plans are available for a 4 Bedroom Single Family home up to approximately 3,000 square feet....

PROPERTY FEATURES

ParkingGarage	Heating	Water	Sewer
None	None	Public	Public Sewer

CONTACT



Ask for Joyce McMahon
Berger Realty Inc
3160 Asbury Avenue, Ocean City
Call:
Email to: jmm@bergerrealty.com

Scan to see Property page.

