

# Berger Realty

Since 1926



Berger Realty, Inc.  
3160 Asbury Avenue  
Ocean City, NJ 08226  
1-877-237-4371 / 609-399-0076  
info@bergerrealty.com



4105 Landis, Sea Isle City, NJ, 08243

Price \$250,000.00



### PROPERTY DETAILS

|              |        |
|--------------|--------|
| Total Rooms  |        |
| Bedrooms     | 0      |
| Baths Full   | 0      |
| Baths Half   | 0      |
| Year Built   |        |
| Type         |        |
| Block Number | 0      |
| Listing #    | 588775 |
| Taxes        |        |

### COMMENTS

**VOTED ONE OF THE BEST RESTAURANTS IN SOUTH JERSEY (LOCAL EDITION) SEE PICS...Business only .. must sign lease with Landlord for the building. Here's a fantastic business opportunity to own a thriving pizza shop in the most desirable area of Sea Isle, located next to the corner of Landis and JFK Blvd. This prime spot is right in the heart of everything, just one block fro...**

### PROPERTY FEATURES

|                        |  |                       |   |
|------------------------|--|-----------------------|---|
| Exterior<br>Brick      | OutsideFeatures<br>Restrooms<br>Security Light/System<br>See Remarks<br>Sign | ParkingGarage<br>None | InteriorFeatures<br>220 Volt Electricity<br>Fire Sprinkler System<br>Restroom<br>Security System<br>Smoke/Fire Alarm<br>Storage |
| Heating<br>Gas-Natural | Cooling<br>Ceiling Fan(s)<br>Central   | HotWater<br>Gas       | Water<br>Public   |
| Sewer<br>Public Sewer  |  |                       |   |

### CONTACT



Ask for Margarita Kobilianets  
Berger Realty Inc  
3160 Asbury Avenue, Ocean City  
Call: 609-674-3417  
Email to: mak@bergerrealty.com

Scan to see Property page.



# Berger Realty

Since 1926



Berger Realty, Inc.  
3160 Asbury Avenue  
Ocean City, NJ 08226  
1-877-237-4371 / 609-399-0076  
info@bergerrealty.com



4105 Landis, Sea Isle City, NJ, 08243

Price \$250,000.00



### PROPERTY DETAILS

|              |        |
|--------------|--------|
| Total Rooms  |        |
| Bedrooms     | 0      |
| Baths Full   | 0      |
| Baths Half   | 0      |
| Year Built   |        |
| Type         |        |
| Block Number | 0      |
| Listing #    | 588775 |
| Taxes        |        |

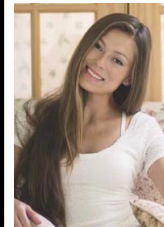
### COMMENTS

**VOTED ONE OF THE BEST RESTAURANTS IN SOUTH JERSEY (LOCAL EDITION) SEE PICS...Business only .. must sign lease with Landlord for the building. Here's a fantastic business opportunity to own a thriving pizza shop in the most desirable area of Sea Isle, located next to the corner of Landis and JFK Blvd. This prime spot is right in the heart of everything, just one block fro...**

### PROPERTY FEATURES

|                        |  |                       |   |
|------------------------|--|-----------------------|---|
| Exterior<br>Brick      | OutsideFeatures<br>Restrooms<br>Security Light/System<br>See Remarks<br>Sign | ParkingGarage<br>None | InteriorFeatures<br>220 Volt Electricity<br>Fire Sprinkler System<br>Restroom<br>Security System<br>Smoke/Fire Alarm<br>Storage |
| Heating<br>Gas-Natural | Cooling<br>Ceiling Fan(s)<br>Central   | HotWater<br>Gas       | Water<br>Public   |
| Sewer<br>Public Sewer  |  |                       |   |

### CONTACT



Ask for Margarita Kobilianets  
Berger Realty Inc  
3160 Asbury Avenue, Ocean City  
Call: 609-674-3417  
Email to: mak@bergerrealty.com

Scan to see Property page.

