

Berger Realty

Since 1926



Berger Realty, Inc.
3160 Asbury Avenue
Ocean City, NJ 08226
1-877-237-4371 / 609-399-0076
info@bergerrealty.com



1930 Wesley, Ocean City, NJ, 08226

Price \$2,990,000.00

PROPERTY DETAILS

Total Rooms	24
Bedrooms	10
Baths Full	3
Baths Half	2
Year Built	
Type	Single Family
Block Number	1902
Listing #	588727
Taxes	12086.00



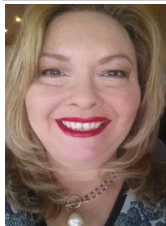
COMMENTS

LOCATION, LOCATION, LOCATION. ONE OF A KIND, GOLD COAST - MULTI-FAMILY TRIPLEX ON A LARGE 50 X 120 LOT. TWO - 4bds, 1 1/2ba, units + 2bds, 1ba garage apartment. 1/2 Block from Gold Coast Beach and Boardwalk. Exceptional outdoor space and plenty of off street parking....

PROPERTY FEATURES

Exterior	OutsideFeatures	ParkingGarage	AlsoIncluded
Wood Shingle	Deck	Detached Garage	Furnished
	Enclosed Outside Shower	Two Car	
	Fenced Yard		
	Porch		
	Porch Screened		
	Sprinkler System		
Basement	Heating	Cooling	Water
Crawl Space	Gas-Natural	Central	Public
	Multi-Zoned	Multi-Zoned	
Sewer			
Public Sewer			

CONTACT



Ask for Theresa Maina
Berger Realty Inc
3160 Asbury Avenue, Ocean City
Call: 609-703-7725
Email to: tam@bergerrealty.com

Scan to see Property page.



Berger Realty

Since 1926



Berger Realty, Inc.
3160 Asbury Avenue
Ocean City, NJ 08226
1-877-237-4371 / 609-399-0076
info@bergerrealty.com



1930 Wesley, Ocean City, NJ, 08226

Price \$2,990,000.00

PROPERTY DETAILS

Total Rooms	24
Bedrooms	10
Baths Full	3
Baths Half	2
Year Built	
Type	Single Family
Block Number	1902
Listing #	588727
Taxes	12086.00



COMMENTS

LOCATION, LOCATION, LOCATION. ONE OF A KIND, GOLD COAST - MULTI-FAMILY TRIPLEX ON A LARGE 50 X 120 LOT. TWO - 4bds, 1 1/2ba, units + 2bds, 1ba garage apartment. 1/2 Block from Gold Coast Beach and Boardwalk. Exceptional outdoor space and plenty of off street parking....

PROPERTY FEATURES

Exterior	OutsideFeatures	ParkingGarage	AlsoIncluded
Wood Shingle	Deck	Detached Garage	Furnished
	Enclosed Outside Shower	Two Car	
	Fenced Yard		
	Porch		
	Porch Screened		
	Sprinkler System		
Basement	Heating	Cooling	Water
Crawl Space	Gas-Natural	Central	Public
	Multi-Zoned	Multi-Zoned	
Sewer			
Public Sewer			

CONTACT



Ask for Theresa Maina
Berger Realty Inc
3160 Asbury Avenue, Ocean City
Call: 609-703-7725
Email to: tam@bergerrealty.com

Scan to see Property page.

