

Berger Realty

Since 1928



Berger Realty, Inc.
3160 Asbury Avenue
Ocean City, NJ 08226
1-877-237-4371 / 609-399-0076
info@bergerrealty.com



6 Newport, A6, Ventnor, NJ, 08406

Price \$340,000.00

PROPERTY DETAILS

Total Rooms	4
Bedrooms	2
Baths Full	1
Baths Half	0
Year Built	
Type	Condo
Block Number	122
Listing #	588615
Taxes	1719.00

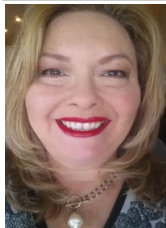
COMMENTS

New Price! Only two blocks to the beach and boardwalk. Located close to everything Ventnor City has to offer. This spacious first floor 2 bedroom one bath condo offers you seasonal, year round or investment opportunities. Enjoy a pet-friendly environment with low taxes and reasonable condo fee which includes gas, heat, hot water, water, sewer, general building insurance, ...

PROPERTY FEATURES

ParkingGarage	Heating	Cooling	Water
None	Baseboard	Wall Units	Public Water
Sewer			
Public Sewer			

CONTACT



Ask for Theresa Maina
Berger Realty Inc
3160 Asbury Avenue, Ocean City
Call: 609-703-7725
Email to: tam@bergerrealty.com

Scan to see Property page.



Berger Realty

Since 1928



Berger Realty, Inc.
3160 Asbury Avenue
Ocean City, NJ 08226
1-877-237-4371 / 609-399-0076
info@bergerrealty.com



6 Newport, A6, Ventnor, NJ, 08406

Price \$340,000.00

PROPERTY DETAILS

Total Rooms	4
Bedrooms	2
Baths Full	1
Baths Half	0
Year Built	
Type	Condo
Block Number	122
Listing #	588615
Taxes	1719.00

COMMENTS

New Price! Only two blocks to the beach and boardwalk. Located close to everything Ventnor City has to offer. This spacious first floor 2 bedroom one bath condo offers you seasonal, year round or investment opportunities. Enjoy a pet-friendly environment with low taxes and reasonable condo fee which includes gas, heat, hot water, water, sewer, general building insurance, ...

PROPERTY FEATURES

ParkingGarage	Heating	Cooling	Water
None	Baseboard	Wall Units	Public Water
Sewer			
Public Sewer			

CONTACT



Ask for Theresa Maina
Berger Realty Inc
3160 Asbury Avenue, Ocean City
Call: 609-703-7725
Email to: tam@bergerrealty.com

Scan to see Property page.

