

# Berger Realty

Since 1926



Berger Realty, Inc.  
3160 Asbury Avenue  
Ocean City, NJ 08226  
1-877-237-4371 / 609-399-0076  
info@bergerrealty.com



725 Duerer St, Galloway Township, NJ, 08205

Price \$55,000.00

### PROPERTY DETAILS



Total Rooms	
Bedrooms	0
Baths Full	0
Baths Half	0
Year Built	
Type	
Block Number	348
Listing #	588408
Taxes	1014.00

### COMMENTS

\*\*\*\*\*JUST UNDER ONE ACRE .9998 ACRES\*\*\*\*\* SINGLE RESIDENTIAL LOT HAD PINELANDS APPROVAL IN 2007 NEEDS TO BE REINSTATED \*\*SEE PINELANDS APPROVAL LETTER FR 2007 IN ASSOCIATED DOCS\*\*\*\*\*

### PROPERTY FEATURES

### CONTACT



Ask for Joyce McMahon  
Berger Realty Inc  
3160 Asbury Avenue, Ocean City  
Call:  
Email to: [jmm@bergerrealty.com](mailto:jmm@bergerrealty.com)

Scan to see Property page.



# Berger Realty

Since 1926



Berger Realty, Inc.  
3160 Asbury Avenue  
Ocean City, NJ 08226  
1-877-237-4371 / 609-399-0076  
info@bergerrealty.com



725 Duerer St, Galloway Township, NJ, 08205

Price \$55,000.00

### PROPERTY DETAILS



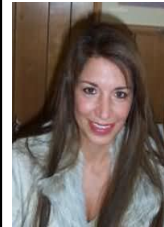
Total Rooms	
Bedrooms	0
Baths Full	0
Baths Half	0
Year Built	
Type	
Block Number	348
Listing #	588408
Taxes	1014.00

### COMMENTS

\*\*\*\*\*JUST UNDER ONE ACRE .9998 ACRES\*\*\*\*\* SINGLE RESIDENTIAL LOT HAD PINELANDS APPROVAL IN 2007 NEEDS TO BE REINSTATED \*\*SEE PINELANDS APPROVAL LETTER FR 2007 IN ASSOCIATED DOCS\*\*\*\*\*

### PROPERTY FEATURES

### CONTACT



Ask for Joyce McMahon  
Berger Realty Inc  
3160 Asbury Avenue, Ocean City  
Call:  
Email to: [jmm@bergerrealty.com](mailto:jmm@bergerrealty.com)

Scan to see Property page.

