



Berger Realty, Inc
1330 Bay Avenue
Ocean City, NJ 08226
609-391-1330/609-391-1300
info@bergerrealty.com



725 Duerer St, Galloway Township, NJ, 08205

Price \$55,000.00



PROPERTY DETAILS

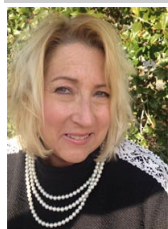
| | |
|--------------|---------|
| Total Rooms | |
| Bedrooms | 0 |
| Baths Full | 0 |
| Baths Half | 0 |
| Year Built | |
| Type | |
| Block Number | 348 |
| Listing # | 588408 |
| Taxes | 1014.00 |

COMMENTS

*****JUST UNDER ONE ACRE .9998 ACRES***** SINGLE RESIDENTIAL LOT
HAD PINELANDS APPROVAL IN 2007 NEEDS TO BE REINSTATED **SEE PINELANDS
APPROVAL LETTER FR 2007 IN ASSOCIATED DOCS*****

PROPERTY FEATURES

CONTACT



Ask for Joanne Kelly
Berger Realty Inc
1330 Bay Avenue, Ocean City
Call: 609-425-2106
Email to: jmk@bergerrealty.com

Scan to see Property page.



Berger Realty, Inc
1330 Bay Avenue
Ocean City, NJ 08226
609-391-1330/609-391-1300
info@bergerrealty.com



725 Duerer St, Galloway Township, NJ, 08205

Price \$55,000.00



PROPERTY DETAILS

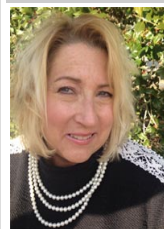
| | |
|--------------|---------|
| Total Rooms | |
| Bedrooms | 0 |
| Baths Full | 0 |
| Baths Half | 0 |
| Year Built | |
| Type | |
| Block Number | 348 |
| Listing # | 588408 |
| Taxes | 1014.00 |

COMMENTS

*****JUST UNDER ONE ACRE .9998 ACRES***** SINGLE RESIDENTIAL LOT
HAD PINELANDS APPROVAL IN 2007 NEEDS TO BE REINSTATED **SEE PINELANDS
APPROVAL LETTER FR 2007 IN ASSOCIATED DOCS*****

PROPERTY FEATURES

CONTACT



Ask for Joanne Kelly
Berger Realty Inc
1330 Bay Avenue, Ocean City
Call: 609-425-2106
Email to: jmk@bergerrealty.com

Scan to see Property page.

