



Berger Realty, Inc.
3160 Asbury Avenue
Ocean City, NJ 08226
1-877-237-4371 / 609-399-0076
info@bergerrealty.com



2316 Murray, Atlantic City, NJ, 08401

Price \$249,000.00



PROPERTY DETAILS

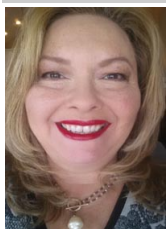
Total Rooms	
Bedrooms	0
Baths Full	0
Baths Half	0
Year Built	
Type	
Block Number	3
Listing #	588298
Taxes	2916.00

COMMENTS

Venice Park!!! beautiful buildable lot on the water lot 50X105 next to the open bay. Newer Bulk Head. do not miss this one....

PROPERTY FEATURES

CONTACT



Ask for Theresa Maina
Berger Realty Inc
3160 Asbury Avenue, Ocean City
Call: 609-703-7725
Email to: tam@bergerrealty.com

Scan to see Property page.



Berger Realty, Inc.
3160 Asbury Avenue
Ocean City, NJ 08226
1-877-237-4371 / 609-399-0076
info@bergerrealty.com



2316 Murray, Atlantic City, NJ, 08401

Price \$249,000.00



PROPERTY DETAILS

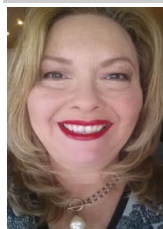
Total Rooms	
Bedrooms	0
Baths Full	0
Baths Half	0
Year Built	
Type	
Block Number	3
Listing #	588298
Taxes	2916.00

COMMENTS

Venice Park!!! beautiful buildable lot on the water lot 50X105 next to the open bay. Newer Bulk Head. do not miss this one....

PROPERTY FEATURES

CONTACT



Ask for Theresa Maina
Berger Realty Inc
3160 Asbury Avenue, Ocean City
Call: 609-703-7725
Email to: tam@bergerrealty.com

Scan to see Property page.

