

# Berger Realty

Since 1926



Berger Realty, Inc.  
3160 Asbury Avenue  
Ocean City, NJ 08226  
1-877-237-4371 / 609-399-0076  
info@bergerrealty.com



2059 Ocean Heights, Egg Harbor Township, NJ, 08234

Price \$299,900.00



## Land For Sale

### PROPERTY DETAILS

Total Rooms	
Bedrooms	0
Baths Full	0
Baths Half	0
Year Built	
Type	
Block Number	235
Listing #	588134
Taxes	9053.00

### COMMENTS

Great opportunity on highly visible road zoned NB (Neighborhood Business) Retail Center in neighborhood business zone high traffic corner location near high volume Super Wawa and 5 Points. Previous site plan approvals were obtained for Phase-1 8,5000 sq. ft. building with 46 parking spaces, Phase-2 6000 sq.ft. retail with 20 additional paved parking spaces. The storm wate...

### PROPERTY FEATURES

### CONTACT



Ask for Margarita Kobilianets  
Berger Realty Inc  
3160 Asbury Avenue, Ocean City  
Call: 609-674-3417  
Email to: mak@bergerrealty.com

Scan to see Property page.



# Berger Realty

Since 1926



Berger Realty, Inc.  
3160 Asbury Avenue  
Ocean City, NJ 08226  
1-877-237-4371 / 609-399-0076  
info@bergerrealty.com



2059 Ocean Heights, Egg Harbor Township, NJ, 08234

Price \$299,900.00



## Land For Sale

### PROPERTY DETAILS

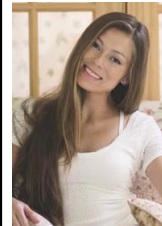
Total Rooms	
Bedrooms	0
Baths Full	0
Baths Half	0
Year Built	
Type	
Block Number	235
Listing #	588134
Taxes	9053.00

### COMMENTS

Great opportunity on highly visible road zoned NB (Neighborhood Business) Retail Center in neighborhood business zone high traffic corner location near high volume Super Wawa and 5 Points. Previous site plan approvals were obtained for Phase-1 8,5000 sq. ft. building with 46 parking spaces, Phase-2 6000 sq.ft. retail with 20 additional paved parking spaces. The storm wate...

### PROPERTY FEATURES

### CONTACT



Ask for Margarita Kobilianets  
Berger Realty Inc  
3160 Asbury Avenue, Ocean City  
Call: 609-674-3417  
Email to: mak@bergerrealty.com

Scan to see Property page.

