

Berger Realty

Since 1928



Berger Realty, Inc
1330 Bay Avenue
Ocean City, NJ 08226
609-391-1330/609-391-1300
info@bergerrealty.com



2059 Ocean Heights, Egg Harbor Township, NJ, 08234

Price \$299,900.00

PROPERTY DETAILS

Total Rooms	
Bedrooms	0
Baths Full	0
Baths Half	0
Year Built	
Type	
Block Number	235
Listing #	588134
Taxes	9053.00

COMMENTS

Great opportunity on highly visible road zoned NB (Neighborhood Business) Retail Center in neighborhood business zone high traffic corner location near high volume Super Wawa and 5 Points. Previous site plan approvals were obtained for Phase-1 8,5000 sq. ft. building with 46 parking spaces, Phase-2 6000 sq.ft. retail with 20 additional paved parking spaces. The storm wate...

PROPERTY FEATURES

CONTACT



Ask for Joanne Kelly
Berger Realty Inc
1330 Bay Avenue, Ocean City
Call: 609-425-2106
Email to: jmk@bergerrealty.com

Scan to see Property page.



Berger Realty

Since 1928



Berger Realty, Inc
1330 Bay Avenue
Ocean City, NJ 08226
609-391-1330/609-391-1300
info@bergerrealty.com



2059 Ocean Heights, Egg Harbor Township, NJ, 08234

Price \$299,900.00

PROPERTY DETAILS

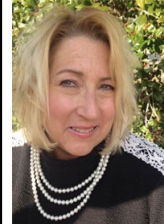
Total Rooms	
Bedrooms	0
Baths Full	0
Baths Half	0
Year Built	
Type	
Block Number	235
Listing #	588134
Taxes	9053.00

COMMENTS

Great opportunity on highly visible road zoned NB (Neighborhood Business) Retail Center in neighborhood business zone high traffic corner location near high volume Super Wawa and 5 Points. Previous site plan approvals were obtained for Phase-1 8,5000 sq. ft. building with 46 parking spaces, Phase-2 6000 sq.ft. retail with 20 additional paved parking spaces. The storm wate...

PROPERTY FEATURES

CONTACT



Ask for Joanne Kelly
Berger Realty Inc
1330 Bay Avenue, Ocean City
Call: 609-425-2106
Email to: jmk@bergerrealty.com

Scan to see Property page.

