

# Berger Realty

Since 1926



Berger Realty, Inc.  
3160 Asbury Avenue  
Ocean City, NJ 08226  
1-877-237-4371 / 609-399-0076  
info@bergerrealty.com



1520 Route 50, Upper Township, NJ, 08270

Price \$230,000.00



### PROPERTY DETAILS

Total Rooms	
Bedrooms	0
Baths Full	0
Baths Half	0
Year Built	
Type	
Block Number	382
Listing #	588081
Taxes	5880.00

### COMMENTS

6.87 +/- acres. \$33,478.90/acre. Located in Tuckahoe, Upper Township in Cape May County, on the south side across from Dollar General and near Levari's Seafood & American Grille. Route 50 is a prominent route to the shore points of Ocean City, Strathmere & Sea Isle, with connections to Rt. 9 and Garden State Parkway. Call LA for details. Lots must be sold together...

### PROPERTY FEATURES

### CONTACT



Ask for Donna Brown  
Berger Realty Inc  
3160 Asbury Avenue, Ocean City  
Call: 609-425-8352  
Email to: dmb@bergerrealty.com

Scan to see Property page.



# Berger Realty

Since 1926

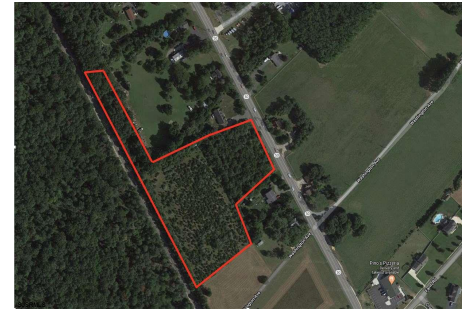


Berger Realty, Inc.  
3160 Asbury Avenue  
Ocean City, NJ 08226  
1-877-237-4371 / 609-399-0076  
info@bergerrealty.com



1520 Route 50, Upper Township, NJ, 08270

Price \$230,000.00



### PROPERTY DETAILS

Total Rooms	
Bedrooms	0
Baths Full	0
Baths Half	0
Year Built	
Type	
Block Number	382
Listing #	588081
Taxes	5880.00

### COMMENTS

6.87 +/- acres. \$33,478.90/acre. Located in Tuckahoe, Upper Township in Cape May County, on the south side across from Dollar General and near Levari's Seafood & American Grille. Route 50 is a prominent route to the shore points of Ocean City, Strathmere & Sea Isle, with connections to Rt. 9 and Garden State Parkway. Call LA for details. Lots must be sold together...

### PROPERTY FEATURES

### CONTACT



Ask for Donna Brown  
Berger Realty Inc  
3160 Asbury Avenue, Ocean City  
Call: 609-425-8352  
Email to: dmb@bergerrealty.com

Scan to see Property page.

