

Berger Realty

Since 1926



Berger Realty, Inc.
3160 Asbury Avenue
Ocean City, NJ 08226
1-877-237-4371 / 609-399-0076
info@bergerrealty.com



12 Furlong, Cape May Court House, NJ, 08210

Price \$549,000.00



PROPERTY DETAILS

Total Rooms	10
Bedrooms	3
Baths Full	2
Baths Half	0
Year Built	1980
Type	Single Family
Block Number	251
Listing #	587965
Taxes	5471.00

COMMENTS

Welcome to 12 Furlong Dr.,(2400 Sq/Ft) located in the South Seaville section of Cape May Courthouse, a beautifully maintained three-bedroom, two-bath ranch-style home set on approximately 1.7 acres. Situated just off exit 17 of the Parkway, it's ideal for year-round living or a beach getaway, with Sea Isle, Stone Harbor, and Avalon just minutes away. The open-concept kitc...

PROPERTY FEATURES

Exterior Vinyl	OutsideFeatures Deck Fenced Yard Paved Road Pool-In Ground Porch Shed	ParkingGarage Detached Garage One Car	OtherRooms Den/TV Room Dining Area Dining Room Eat In Kitchen Great Room Laundry/Utility Room Pantry Primary BR on 1st floor Storage Attic
InteriorFeatures Bar Cathedral Ceiling Kitchen Center Island Smoke/Fire Alarm Storage Walk In Closet Whirlpool	AppliancesIncluded Dishwasher Disposal Gas Stove Microwave Refrigerator Self Cleaning Oven	AlsoIncluded Blinds	Heating Baseboard Forced Air Gas-Natural
Cooling Ceiling Fan(s) Central	HotWater Electric	Water Well	Sewer Private

CONTACT

Ask for Marki Lyn Warlow
Berger Realty Inc
3160 Asbury Avenue, Ocean City
Call:

Scan to see Property page.

Berger Realty

Since 1926



Berger Realty, Inc.
3160 Asbury Avenue
Ocean City, NJ 08226
1-877-237-4371 / 609-399-0076
info@bergerrealty.com



12 Furlong, Cape May Court House, NJ, 08210

Price \$549,000.00



PROPERTY DETAILS

Total Rooms	10
Bedrooms	3
Baths Full	2
Baths Half	0
Year Built	1980
Type	Single Family
Block Number	251
Listing #	587965
Taxes	5471.00

COMMENTS

Welcome to 12 Furlong Dr.,(2400 Sq/Ft) located in the South Seaville section of Cape May Courthouse, a beautifully maintained three-bedroom, two-bath ranch-style home set on approximately 1.7 acres. Situated just off exit 17 of the Parkway, it's ideal for year-round living or a beach getaway, with Sea Isle, Stone Harbor, and Avalon just minutes away. The open-concept kitc...

PROPERTY FEATURES

Exterior Vinyl	OutsideFeatures Deck Fenced Yard Paved Road Pool-In Ground Porch Shed	ParkingGarage Detached Garage One Car	OtherRooms Den/TV Room Dining Area Dining Room Eat In Kitchen Great Room Laundry/Utility Room Pantry Primary BR on 1st floor Storage Attic
InteriorFeatures Bar Cathedral Ceiling Kitchen Center Island Smoke/Fire Alarm Storage Walk In Closet Whirlpool	AppliancesIncluded Dishwasher Disposal Gas Stove Microwave Refrigerator Self Cleaning Oven	AlsoIncluded Blinds	Heating Baseboard Forced Air Gas-Natural
Cooling Ceiling Fan(s) Central	HotWater Electric	Water Well	Sewer Private

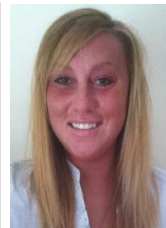
CONTACT

Ask for Marki Lyn Warlow
Berger Realty Inc
3160 Asbury Avenue, Ocean City
Call:

Scan to see Property page.



Email to: mlw@bergerrealty.com



Email to: mlw@bergerrealty.com

