

Berger Realty

Since 1928



Berger Realty, Inc
1330 Bay Avenue
Ocean City, NJ 08226
609-391-1330/609-391-1300
info@bergerrealty.com



3225 Juniper Ct, 3225, Mays Landing, NJ, 08330

Price \$175,000.00

PROPERTY DETAILS

Total Rooms	6
Bedrooms	2
Baths Full	2
Baths Half	0
Year Built	1986
Type	Condo
Block Number	1135.
Listing #	587948
Taxes	1558.00

COMMENTS

This corner condo offers an inviting 2-bedroom, 2-bathroom layout with an open floor plan and cathedral ceilings that fill the home with natural light. On the main floor, you'll find a spacious master bedroom for ultimate ease and privacy. Upstairs, the second bedroom has a full bathroom and a large closet, currently set up as a game room but easily transformed back into ...

PROPERTY FEATURES

ParkingGarage	Heating	Water	Sewer
None	Electric	Public Water	Public Sewer

CONTACT



Ask for Joanne Kelly
Berger Realty Inc
1330 Bay Avenue, Ocean City
Call: 609-425-2106
Email to: jmk@bergerrealty.com

Scan to see Property page.



Berger Realty

Since 1928



Berger Realty, Inc
1330 Bay Avenue
Ocean City, NJ 08226
609-391-1330/609-391-1300
info@bergerrealty.com



3225 Juniper Ct, 3225, Mays Landing, NJ, 08330

Price \$175,000.00

PROPERTY DETAILS

Total Rooms	6
Bedrooms	2
Baths Full	2
Baths Half	0
Year Built	1986
Type	Condo
Block Number	1135.
Listing #	587948
Taxes	1558.00

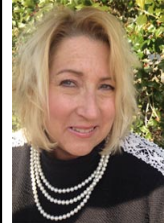
COMMENTS

This corner condo offers an inviting 2-bedroom, 2-bathroom layout with an open floor plan and cathedral ceilings that fill the home with natural light. On the main floor, you'll find a spacious master bedroom for ultimate ease and privacy. Upstairs, the second bedroom has a full bathroom and a large closet, currently set up as a game room but easily transformed back into ...

PROPERTY FEATURES

ParkingGarage	Heating	Water	Sewer
None	Electric	Public Water	Public Sewer

CONTACT



Ask for Joanne Kelly
Berger Realty Inc
1330 Bay Avenue, Ocean City
Call: 609-425-2106
Email to: jmk@bergerrealty.com

Scan to see Property page.

