



1403 Loretta, Mays Landing, NJ, 08330

Price \$649,900.00

### PROPERTY DETAILS

Total Rooms	0
Bedrooms	0
Baths Full	0
Baths Half	0
Year Built	
Type	
Block Number	8
Listing #	587813
Taxes	7461.00



### COMMENTS

*This property offers a unique opportunity to own a beautiful quadplex in Mays Landin this property offers 4units each 2 Bedroom 1 Bath with a great rental income. This property is legally zoned as a quadplex, providing the opportunity to generate extra income. You can live in one unit and rent out the other 3 units. This investment is an ideal for long-term tenants. The pr...*

### PROPERTY FEATURES

ParkingGarage	OtherRooms	Heating	Cooling
None	Dining Area	Baseboard	Window Units
	Kitchen		
	Living Room		
HotWater	Water	Sewer	
Gas	Public	Public Sewer	

### CONTACT



Ask for Frank Shoemaker  
Berger Realty Inc  
3160 Asbury Avenue, Ocean City  
Call:  
Email to: fcs@bergerrealty.com

Scan to see Property page.

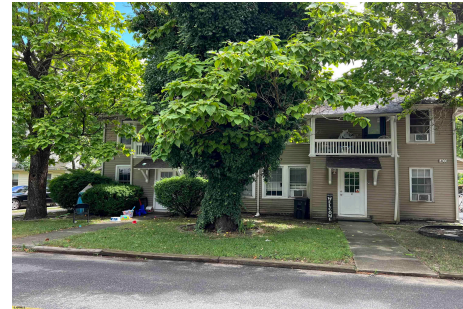


1403 Loretta, Mays Landing, NJ, 08330

Price \$649,900.00

### PROPERTY DETAILS

Total Rooms	0
Bedrooms	0
Baths Full	0
Baths Half	0
Year Built	
Type	
Block Number	8
Listing #	587813
Taxes	7461.00



### COMMENTS

*This property offers a unique opportunity to own a beautiful quadplex in Mays Landin this property offers 4units each 2 Bedroom 1 Bath with a great rental income. This property is legally zoned as a quadplex, providing the opportunity to generate extra income. You can live in one unit and rent out the other 3 units. This investment is an ideal for long-term tenants. The pr...*

### PROPERTY FEATURES

ParkingGarage	OtherRooms	Heating	Cooling
None	Dining Area	Baseboard	Window Units
	Kitchen		
	Living Room		
HotWater	Water	Sewer	
Gas	Public	Public Sewer	

### CONTACT



Ask for Frank Shoemaker  
Berger Realty Inc  
3160 Asbury Avenue, Ocean City  
Call:  
Email to: fcs@bergerrealty.com

Scan to see Property page.

