

Berger Realty

Since 1928



Berger Realty, Inc
1330 Bay Avenue
Ocean City, NJ 08226
609-391-1330/609-391-1300
info@bergerrealty.com



1403 Loretta, Mays Landing, NJ, 08330

Price \$649,900.00

PROPERTY DETAILS

Total Rooms	0
Bedrooms	0
Baths Full	0
Baths Half	0
Year Built	
Type	
Block Number	8
Listing #	587813
Taxes	7461.00



COMMENTS

This property offers a unique opportunity to own a beautiful quadplex in Mays Landin this property offers 4units each 2 Bedroom 1 Bath with a great rental income. This property is legally zoned as a quadplex, providing the opportunity to generate extra income. You can live in one unit and rent out the other 3 units. This investment is an ideal for long-term tenants. The pr...

PROPERTY FEATURES

ParkingGarage	OtherRooms	Heating	Cooling
None	Dining Area	Baseboard	Window Units
	Kitchen		
	Living Room		
HotWater	Water	Sewer	
Gas	Public	Public Sewer	

CONTACT



Ask for Carol Cawley
Berger Realty Inc
1330 Bay Avenue, Ocean City
Call: 609-760-3809
Email to: clc@bergerrealty.com

Scan to see Property page.



Berger Realty

Since 1928



Berger Realty, Inc
1330 Bay Avenue
Ocean City, NJ 08226
609-391-1330/609-391-1300
info@bergerrealty.com

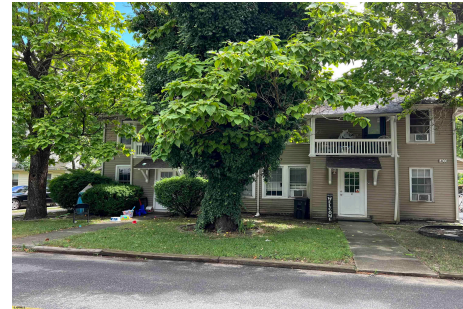


1403 Loretta, Mays Landing, NJ, 08330

Price \$649,900.00

PROPERTY DETAILS

Total Rooms	0
Bedrooms	0
Baths Full	0
Baths Half	0
Year Built	
Type	
Block Number	8
Listing #	587813
Taxes	7461.00



COMMENTS

This property offers a unique opportunity to own a beautiful quadplex in Mays Landin this property offers 4units each 2 Bedroom 1 Bath with a great rental income. This property is legally zoned as a quadplex, providing the opportunity to generate extra income. You can live in one unit and rent out the other 3 units. This investment is an ideal for long-term tenants. The pr...

PROPERTY FEATURES

ParkingGarage	OtherRooms	Heating	Cooling
None	Dining Area	Baseboard	Window Units
	Kitchen		
	Living Room		
HotWater	Water	Sewer	
Gas	Public	Public Sewer	

CONTACT



Ask for Carol Cawley
Berger Realty Inc
1330 Bay Avenue, Ocean City
Call: 609-760-3809
Email to: clc@bergerrealty.com

Scan to see Property page.

