

# Berger Realty

Since 1928



Berger Realty, Inc.  
3160 Asbury Avenue  
Ocean City, NJ 08226  
1-877-237-4371 / 609-399-0076  
info@bergerrealty.com



5983 Laurel, Mays Landing, NJ, 08330

Price \$525,000.00



### PROPERTY DETAILS

Total Rooms	10
Bedrooms	5
Baths Full	3
Baths Half	0
Year Built	
Type	Single Family
Block Number	943
Listing #	587329
Taxes	7966.00

### COMMENTS

**PRICE IMPROVEMENT! LENDER INTEREST RATE BUYDOWN AVAILABLE! CALL LISTING AGENT FOR DETAILS! STUNNING & Fully Remodeled with GORGEOUS Finishes from Top to Bottom is this beautiful 5 Bedroom, 3 Full Bath Home Situated on 1.91 Acres in the Highly Desirable Laureldale Section of Hamilton Township! As you approach the expansive Front Porch and enter this sprawling masterpiece fi...**

### PROPERTY FEATURES

Exterior Brick Concrete See Remarks Vinyl	OutsideFeatures Fenced Yard Porch	ParkingGarage See Remarks	OtherRooms Breakfast Nook Den/TV Room Dining Area Dining Room Eat In Kitchen Laundry/Utility Room Recreation/Family
InteriorFeatures Carbon Monoxide Detector Smoke/Fire Alarm	AppliancesIncluded Dishwasher Gas Stove Refrigerator Self Cleaning Oven	Basement 6 Ft. or More Head Room Crawl Space Finished Full Heated Inside Entrance Masonry Floor/Wall	Heating Gas-Natural Multi-Zoned
Cooling Ceiling Fan(s) Central Multi-Zoned	HotWater Gas	Water Well	Sewer Septic

### CONTACT

Ask for Sara Varani  
Berger Realty Inc  
3160 Asbury Avenue, Ocean City  
Call:

Scan to see Property page.

# Berger Realty

Since 1928



Berger Realty, Inc.  
3160 Asbury Avenue  
Ocean City, NJ 08226  
1-877-237-4371 / 609-399-0076  
info@bergerrealty.com



5983 Laurel, Mays Landing, NJ, 08330

Price \$525,000.00



### PROPERTY DETAILS

Total Rooms	10
Bedrooms	5
Baths Full	3
Baths Half	0
Year Built	
Type	Single Family
Block Number	943
Listing #	587329
Taxes	7966.00

### COMMENTS

**PRICE IMPROVEMENT! LENDER INTEREST RATE BUYDOWN AVAILABLE! CALL LISTING AGENT FOR DETAILS! STUNNING & Fully Remodeled with GORGEOUS Finishes from Top to Bottom is this beautiful 5 Bedroom, 3 Full Bath Home Situated on 1.91 Acres in the Highly Desirable Laureldale Section of Hamilton Township! As you approach the expansive Front Porch and enter this sprawling masterpiece fi...**

### PROPERTY FEATURES

Exterior Brick Concrete See Remarks Vinyl	OutsideFeatures Fenced Yard Porch	ParkingGarage See Remarks	OtherRooms Breakfast Nook Den/TV Room Dining Area Dining Room Eat In Kitchen Laundry/Utility Room Recreation/Family
InteriorFeatures Carbon Monoxide Detector Smoke/Fire Alarm	AppliancesIncluded Dishwasher Gas Stove Refrigerator Self Cleaning Oven	Basement 6 Ft. or More Head Room Crawl Space Finished Full Heated Inside Entrance Masonry Floor/Wall	Heating Gas-Natural Multi-Zoned
Cooling Ceiling Fan(s) Central Multi-Zoned	HotWater Gas	Water Well	Sewer Septic

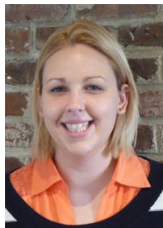
### CONTACT

Ask for Sara Varani  
Berger Realty Inc  
3160 Asbury Avenue, Ocean City  
Call:

Scan to see Property page.



Email to: [sev@bergerrealty.com](mailto:sev@bergerrealty.com)



Email to: [sev@bergerrealty.com](mailto:sev@bergerrealty.com)

