

# Berger Realty

Since 1926



Berger Realty, Inc.  
3160 Asbury Avenue  
Ocean City, NJ 08226  
1-877-237-4371 / 609-399-0076  
info@bergerrealty.com



621 New York, Absecon, NJ, 08205

Price \$200,000.00

PHOTO NOT AVAILABLE



### PROPERTY DETAILS

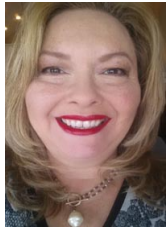
Total Rooms	
Bedrooms	0
Baths Full	0
Baths Half	0
Year Built	
Type	
Block Number	1007.03
Listing #	587274
Taxes	3732.00

### COMMENTS

Great Opportunity!! Over 1 Acre of Commercial Zoned (CC-2) on S. New York Rd. (Rt.9). OVER 100 FEET of FRONTAGE. About a mile from The Seaview Marriott Resort and minutes to Atlantic City. CORNER lot located on the corner of Holly Brook. Main Value is in the land. Home located on the property. Also Listed as LAND MLS#587273...

### PROPERTY FEATURES

### CONTACT



Ask for Theresa Maina  
Berger Realty Inc  
3160 Asbury Avenue, Ocean City  
Call: 609-703-7725  
Email to: tam@bergerrealty.com

Scan to see Property page.



# Berger Realty

Since 1926



Berger Realty, Inc.  
3160 Asbury Avenue  
Ocean City, NJ 08226  
1-877-237-4371 / 609-399-0076  
info@bergerrealty.com



621 New York, Absecon, NJ, 08205

Price \$200,000.00

PHOTO NOT AVAILABLE



### PROPERTY DETAILS

Total Rooms	
Bedrooms	0
Baths Full	0
Baths Half	0
Year Built	
Type	
Block Number	1007.03
Listing #	587274
Taxes	3732.00

### COMMENTS

Great Opportunity!! Over 1 Acre of Commercial Zoned (CC-2) on S. New York Rd. (Rt.9). OVER 100 FEET of FRONTAGE. About a mile from The Seaview Marriott Resort and minutes to Atlantic City. CORNER lot located on the corner of Holly Brook. Main Value is in the land. Home located on the property. Also Listed as LAND MLS#587273...

### PROPERTY FEATURES

### CONTACT



Ask for Theresa Maina  
Berger Realty Inc  
3160 Asbury Avenue, Ocean City  
Call: 609-703-7725  
Email to: tam@bergerrealty.com

Scan to see Property page.

