

Berger Realty

Since 1926



Berger Realty, Inc
1330 Bay Avenue
Ocean City, NJ 08226
609-391-1330/609-391-1300
info@bergerrealty.com



621 New York, Absecon, NJ, 08205

Price \$300,000.00

PHOTO NOT AVAILABLE

PROPERTY DETAILS



Total Rooms	
Bedrooms	0
Baths Full	0
Baths Half	0
Year Built	
Type	
Block Number	1007.03
Listing #	587274
Taxes	3732.00

COMMENTS

Great Opportunity!! Over 1 Acre of Commercial Zoned (CC-2) on S. New York Rd. (Rt.9). OVER 100 FEET of FRONTAGE. About a mile from The Seaview Marriott Resort and minutes to Atlantic City. CORNER lot located on the corner of Holly Brook. Main Value is in the land. Home located on the property. Also Listed as LAND MLS#587273...

PROPERTY FEATURES

CONTACT



Ask for Joanne Kelly
Berger Realty Inc
1330 Bay Avenue, Ocean City
Call: 609-425-2106
Email to: jmk@bergerrealty.com

Scan to see Property page.



Berger Realty

Since 1926



Berger Realty, Inc
1330 Bay Avenue
Ocean City, NJ 08226
609-391-1330/609-391-1300
info@bergerrealty.com



621 New York, Absecon, NJ, 08205

Price \$300,000.00

PHOTO NOT AVAILABLE

PROPERTY DETAILS



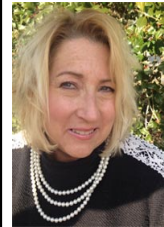
Total Rooms	
Bedrooms	0
Baths Full	0
Baths Half	0
Year Built	
Type	
Block Number	1007.03
Listing #	587274
Taxes	3732.00

COMMENTS

Great Opportunity!! Over 1 Acre of Commercial Zoned (CC-2) on S. New York Rd. (Rt.9). OVER 100 FEET of FRONTAGE. About a mile from The Seaview Marriott Resort and minutes to Atlantic City. CORNER lot located on the corner of Holly Brook. Main Value is in the land. Home located on the property. Also Listed as LAND MLS#587273...

PROPERTY FEATURES

CONTACT



Ask for Joanne Kelly
Berger Realty Inc
1330 Bay Avenue, Ocean City
Call: 609-425-2106
Email to: jmk@bergerrealty.com

Scan to see Property page.

