

Berger Realty

Since 1926



Berger Realty, Inc.
3160 Asbury Avenue
Ocean City, NJ 08226
1-877-237-4371 / 609-399-0076
info@bergerrealty.com

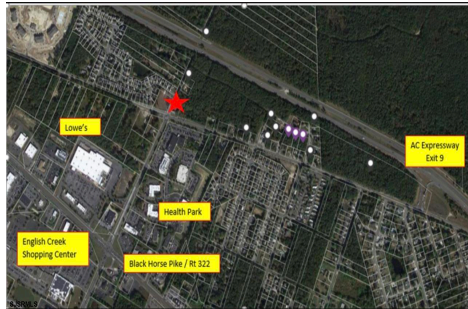


6220 Delilah, Egg Harbor Township, NJ, 08234

Price \$8,500,000.00

PROPERTY DETAILS

Total Rooms	0
Bedrooms	0
Baths Full	0
Baths Half	0
Year Built	
Type	
Block Number	1402
Listing #	587202
Taxes	12049.00



COMMENTS

Prime Land For Sale. Total 54+/- sf. Multiple lots makes up the 54+/- acres. Dual zoning. PO-1 and RG5. Prior approvals for 175 residential units. Near shopping hub of Atlantic County. Close to ShopRite, AtlantiCare Health Park and Life Center, AC Expressway, Walgreen's, Lowe's, many restaurants and convenience food....

PROPERTY FEATURES

CONTACT



Ask for Cynthia Balles
Berger Realty Inc
3160 Asbury Avenue, Ocean City
Call: 609-432-2524
Email to: cyn@bergerrealty.com

Scan to see Property page.



Berger Realty

Since 1926



Berger Realty, Inc.
3160 Asbury Avenue
Ocean City, NJ 08226
1-877-237-4371 / 609-399-0076
info@bergerrealty.com



6220 Delilah, Egg Harbor Township, NJ, 08234

Price \$8,500,000.00

PROPERTY DETAILS

Total Rooms	0
Bedrooms	0
Baths Full	0
Baths Half	0
Year Built	
Type	
Block Number	1402
Listing #	587202
Taxes	12049.00



COMMENTS

Prime Land For Sale. Total 54+/- sf. Multiple lots makes up the 54+/- acres. Dual zoning. PO-1 and RG5. Prior approvals for 175 residential units. Near shopping hub of Atlantic County. Close to ShopRite, AtlantiCare Health Park and Life Center, AC Expressway, Walgreen's, Lowe's, many restaurants and convenience food....

PROPERTY FEATURES

CONTACT



Ask for Cynthia Balles
Berger Realty Inc
3160 Asbury Avenue, Ocean City
Call: 609-432-2524
Email to: cyn@bergerrealty.com

Scan to see Property page.

