

# Berger Realty

Since 1926



Berger Realty, Inc.  
3160 Asbury Avenue  
Ocean City, NJ 08226  
1-877-237-4371 / 609-399-0076  
info@bergerrealty.com



2583 Tilton, Egg Harbor Township, NJ, 08234

Price \$350,000.00

### PROPERTY DETAILS

Total Rooms	0
Bedrooms	0
Baths Full	0
Baths Half	0
Year Built	
Type	
Block Number	1209
Listing #	587199
Taxes	2330.00



### COMMENTS

6+ acres for sale. Zoned RG4. Had prior approvals for 27 unit residential development. Located near many mixed residential and neighborhood business. Excellent access to Garden State Prkwy and Black Horse Pike....

### PROPERTY FEATURES

### CONTACT



Ask for Evelyn "Evie" Schweibinz  
Berger Realty Inc  
3160 Asbury Avenue, Ocean City  
Call:  
Email to: [ems@bergerrealty.com](mailto:ems@bergerrealty.com)

Scan to see Property page.



# Berger Realty

Since 1926



Berger Realty, Inc.  
3160 Asbury Avenue  
Ocean City, NJ 08226  
1-877-237-4371 / 609-399-0076  
info@bergerrealty.com

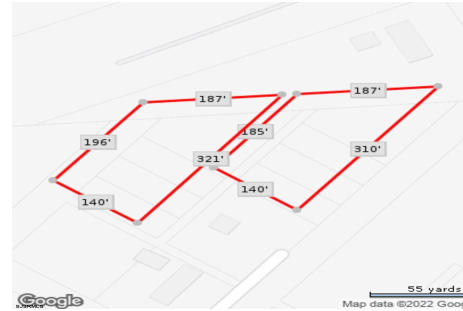


2583 Tilton, Egg Harbor Township, NJ, 08234

Price \$350,000.00

### PROPERTY DETAILS

Total Rooms	0
Bedrooms	0
Baths Full	0
Baths Half	0
Year Built	
Type	
Block Number	1209
Listing #	587199
Taxes	2330.00

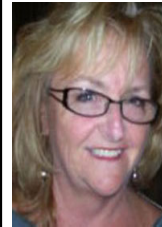


### COMMENTS

6+ acres for sale. Zoned RG4. Had prior approvals for 27 unit residential development. Located near many mixed residential and neighborhood business. Excellent access to Garden State Prkwy and Black Horse Pike....

### PROPERTY FEATURES

### CONTACT



Ask for Evelyn "Evie" Schweibinz  
Berger Realty Inc  
3160 Asbury Avenue, Ocean City  
Call:  
Email to: [ems@bergerrealty.com](mailto:ems@bergerrealty.com)

Scan to see Property page.

