

# Berger Realty

Since 1928



Berger Realty, Inc.  
3160 Asbury Avenue  
Ocean City, NJ 08226  
1-877-237-4371 / 609-399-0076  
info@bergerrealty.com



23-27 Mays Landing Road, Somers Point, NJ, 08244

Price \$2,695,000.00

### PROPERTY DETAILS

Total Rooms	
Bedrooms	0
Baths Full	0
Baths Half	0
Year Built	
Type	
Block Number	1943
Listing #	587176
Taxes	61592.00

### COMMENTS

**FANTASTIC INVESTMENT OPPORTUNITY - 3 Commercial properties for sale FULLY LEASED out to working businesses, including a large parking lot. GREAT RENTAL INCOME with over \$300,000 of rental income per year and to increase. This sale is for the land and buildings - businesses not included. Over 2.5 acres of land acres located in the federally approved OPPORTUNITY ZONE in a ...**

### PROPERTY FEATURES

### CONTACT



Ask for Sara Varani  
Berger Realty Inc  
3160 Asbury Avenue, Ocean City  
Call:  
Email to: sev@bergerrealty.com

Scan to see Property page.



# Berger Realty

Since 1928



Berger Realty, Inc.  
3160 Asbury Avenue  
Ocean City, NJ 08226  
1-877-237-4371 / 609-399-0076  
info@bergerrealty.com



23-27 Mays Landing Road, Somers Point, NJ, 08244

Price \$2,695,000.00

### PROPERTY DETAILS

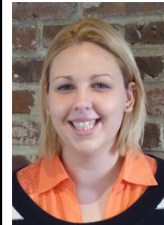
Total Rooms	
Bedrooms	0
Baths Full	0
Baths Half	0
Year Built	
Type	
Block Number	1943
Listing #	587176
Taxes	61592.00

### COMMENTS

**FANTASTIC INVESTMENT OPPORTUNITY - 3 Commercial properties for sale FULLY LEASED out to working businesses, including a large parking lot. GREAT RENTAL INCOME with over \$300,000 of rental income per year and to increase. This sale is for the land and buildings - businesses not included. Over 2.5 acres of land acres located in the federally approved OPPORTUNITY ZONE in a ...**

### PROPERTY FEATURES

### CONTACT



Ask for Sara Varani  
Berger Realty Inc  
3160 Asbury Avenue, Ocean City  
Call:  
Email to: sev@bergerrealty.com

Scan to see Property page.

