

Berger Realty

Since 1928



Berger Realty, Inc.
3160 Asbury Avenue
Ocean City, NJ 08226
1-877-237-4371 / 609-399-0076
info@bergerrealty.com



23-27 Mays Landing Road, Somers Point, NJ, 08244

Price \$2,695,000.00

PROPERTY DETAILS

Total Rooms	
Bedrooms	0
Baths Full	0
Baths Half	0
Year Built	
Type	
Block Number	1943
Listing #	587176
Taxes	61592.00

COMMENTS

FANTASTIC INVESTMENT OPPORTUNITY - 3 Commercial properties for sale FULLY LEASED out to working businesses, including a large parking lot. GREAT RENTAL INCOME with over \$300,000 of rental income per year and to increase. This sale is for the land and buildings - businesses not included. Over 2.5 acres of land acres located in the federally approved OPPORTUNITY ZONE in a ...

PROPERTY FEATURES

CONTACT



Ask for Evelyn "Evie" Schweibinz
Berger Realty Inc
3160 Asbury Avenue, Ocean City
Call:
Email to: ems@bergerrealty.com

Scan to see Property page.



Berger Realty

Since 1928



Berger Realty, Inc.
3160 Asbury Avenue
Ocean City, NJ 08226
1-877-237-4371 / 609-399-0076
info@bergerrealty.com



23-27 Mays Landing Road, Somers Point, NJ, 08244

Price \$2,695,000.00

PROPERTY DETAILS

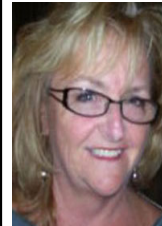
Total Rooms	
Bedrooms	0
Baths Full	0
Baths Half	0
Year Built	
Type	
Block Number	1943
Listing #	587176
Taxes	61592.00

COMMENTS

FANTASTIC INVESTMENT OPPORTUNITY - 3 Commercial properties for sale FULLY LEASED out to working businesses, including a large parking lot. GREAT RENTAL INCOME with over \$300,000 of rental income per year and to increase. This sale is for the land and buildings - businesses not included. Over 2.5 acres of land acres located in the federally approved OPPORTUNITY ZONE in a ...

PROPERTY FEATURES

CONTACT



Ask for Evelyn "Evie" Schweibinz
Berger Realty Inc
3160 Asbury Avenue, Ocean City
Call:
Email to: ems@bergerrealty.com

Scan to see Property page.

