

Berger Realty

Since 1926



Berger Realty, Inc.
3160 Asbury Avenue
Ocean City, NJ 08226
1-877-237-4371 / 609-399-0076
info@bergerrealty.com



87 Marshall, Egg Harbor Township, NJ, 08234

Price \$164,900.00

PROPERTY DETAILS

Total Rooms	0
Bedrooms	0
Baths Full	0
Baths Half	0
Year Built	
Type	
Block Number	6005
Listing #	587174
Taxes	2753.00

COMMENTS

Your opportunity to build your dream home in one of EHT prestigious developments. This is the last lot in this Ballenger Woods. This unique lot offers over 300ft of frontage on Marshall Drive and a 50ft front on Zion Road that could be used as rear access to the property! Ideal for a backyard pole barn with convenient access. Water, electric are already stubbed into curb. ...

PROPERTY FEATURES

CONTACT



Ask for Marki Lyn Warlow
Berger Realty Inc
3160 Asbury Avenue, Ocean City
Call:
Email to: mlw@bergerrealty.com

Scan to see Property page.



Berger Realty

Since 1926



Berger Realty, Inc.
3160 Asbury Avenue
Ocean City, NJ 08226
1-877-237-4371 / 609-399-0076
info@bergerrealty.com



87 Marshall, Egg Harbor Township, NJ, 08234

Price \$164,900.00

PROPERTY DETAILS

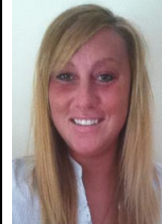
Total Rooms	0
Bedrooms	0
Baths Full	0
Baths Half	0
Year Built	
Type	
Block Number	6005
Listing #	587174
Taxes	2753.00

COMMENTS

Your opportunity to build your dream home in one of EHT prestigious developments. This is the last lot in this Ballenger Woods. This unique lot offers over 300ft of frontage on Marshall Drive and a 50ft front on Zion Road that could be used as rear access to the property! Ideal for a backyard pole barn with convenient access. Water, electric are already stubbed into curb. ...

PROPERTY FEATURES

CONTACT



Ask for Marki Lyn Warlow
Berger Realty Inc
3160 Asbury Avenue, Ocean City
Call:
Email to: mlw@bergerrealty.com

Scan to see Property page.

